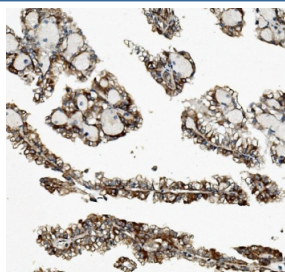


ZFP42 Antibody / Rex1 (RQ6021)

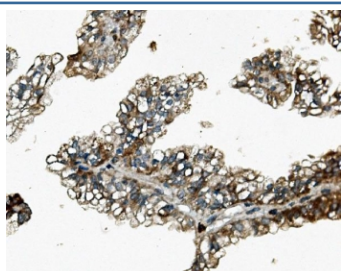
Catalog No.	Formulation	Size
RQ6021	0.5mg/ml if reconstituted with 0.2ml sterile DI water	100 ug

Bulk quote request

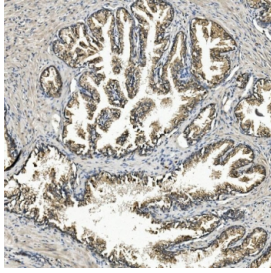
Availability	1-3 business days
Species Reactivity	Human, Mouse, Rat
Format	Antigen affinity purified
Clonality	Polyclonal (rabbit origin)
Isotype	Rabbit IgG
Purity	Affinity purified
Buffer	Lyophilized from 1X PBS with 2% Trehalose and 0.025% sodium azide
UniProt	Q96MM3
Applications	Western Blot : 0.5-1ug/ml Immunohistochemistry : 1-2ug/ml Flow Cytometry : 1-3ug/million cells Direct ELISA : 0.1-0.5ug/ml
Limitations	This ZFP42 antibody is available for research use only.



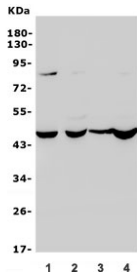
IHC staining of FFPE human renal cancer with ZFP42 antibody. HIER: boil tissue sections in pH8 EDTA for 20 min and allow to cool before testing.



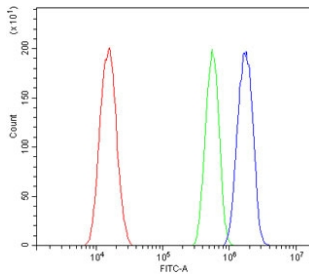
IHC staining of FFPE human renal cancer with ZFP42 antibody. HIER: boil tissue sections in pH8 EDTA for 20 min and allow to cool before testing.



IHC staining of FFPE human prostate cancer with ZFP42 antibody. HIER: boil tissue sections in pH8 EDTA for 20 min and allow to cool before testing.



Western blot testing of human 1) placenta, 2) HeLa, 3) Caco-2 and 4) 22RV1 lysate with ZFP42 antibody. Expected molecular weight: 35-40 kDa.



Flow cytometry testing of human a431 cells with ZFP42 antibody at 1ug/million cells (blocked with goat sera); Red=cells alone, Green=isotype control, Blue= ZFP42 antibody.

Description

Rex1 is a protein that in humans is encoded by the ZFP42 gene. It is mapped to 4q35.2. Rex1 (Zfp-42) is a known marker of pluripotency, and is usually found in undifferentiated embryonic stem cells. In addition to being a marker for pluripotency, its regulation is also critical in maintaining a pluripotent state. As the cells begin to differentiate, Rex1 is severely and abruptly downregulated.

Application Notes

Optimal dilution of the ZFP42 antibody should be determined by the researcher.

Immunogen

Recombinant human protein (amino acids A25-K310) was used as the immunogen for the ZFP42 antibody.

Storage

After reconstitution, the ZFP42 antibody can be stored for up to one month at 4oC. For long-term, aliquot and store at -20oC. Avoid repeated freezing and thawing.

