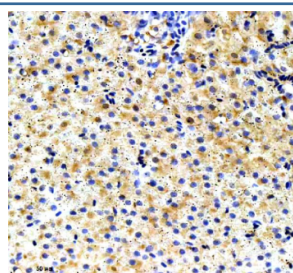


Zebrafish Ube2n Antibody / Isoforms a & b (RZ1020)

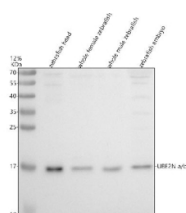
Catalog No.	Formulation	Size
RZ1020	0.5mg/ml if reconstituted with 0.2ml sterile DI water	100 ug

Bulk quote request

Availability	2-3 weeks
Species Reactivity	Zebrafish
Format	Antigen affinity purified
Clonality	Polyclonal (rabbit origin)
Isotype	Rabbit Ig
Purity	Antigen affinity chromatography
Buffer	Lyophilized from 1X PBS with 2% Trehalose
UniProt	Q803J2, Q7T3F3
Localization	Nuclear
Applications	Western Blot : 0.5-1 ug/ml Immunohistochemistry (FFPE) : 2-5 ug/ml
Limitations	This Zebrafish Ube2n antibody is available for research use only.



IHC staining of FFPE Zebrafish liver tissue with Ube2n antibody. HIER: boil tissue sections in pH8 EDTA for 20 min and allow to cool before testing.



Western blot analysis of Ube2na/b protein using Zebrafish Ube2n antibody and 1) zebrafish head 2) whole female zebrafish, 3) whole male zebrafish and 4) zebrafish embryo tissue lysate. Expected molecular weight ~17 kDa.

Description

Predicted to enable ubiquitin conjugating enzyme activity. Acts upstream of or within DNA damage response and protein polyubiquitination. Predicted to be active in nucleus. Orthologous to several human genes including UBE2N (ubiquitin conjugating enzyme E2 N).

Application Notes

Optimal dilution of the Zebrafish Ube2n antibody should be determined by the researcher.

Immunogen

An E.coli-derived zebrafish recombinant protein (amino acids Q13-I152) was used as the immunogen for the Zebrafish Ube2n antibody. This antibody will detect the a and b isoforms.

Storage

After reconstitution, the Zebrafish Ube2n antibody can be stored for up to one month at 4oC. For long-term, aliquot and store at -20oC. Avoid repeated freezing and thawing.