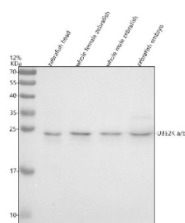


Zebrafish Ube2k Antibody / Ube2ka / Ube2kb (RZ1112)

Catalog No.	Formulation	Size
RZ1112	0.5mg/ml if reconstituted with 0.2ml sterile DI water	100 ug

Bulk quote request

Availability	2-3 weeks
Species Reactivity	Zebrafish
Format	Antigen affinity purified
Clonality	Polyclonal (rabbit origin)
Isotype	Rabbit Ig
Purity	Antigen affinity chromatography
Buffer	Lyophilized from 1X PBS with 2% Trehalose
UniProt	Q5BLA9, Q5PR60
Applications	Western Blot : 0.5-1 ug/ml
Limitations	This Zebrafish Ube2k antibody is available for research use only.



Western blot analysis of UBE2Ka/b protein using Zebrafish Ube2k antibody and 1) zebrafish head, 2) whole female zebrafish, 3) whole male zebrafish and 4) zebrafish embryo tissue lysate. Predicted molecular weight ~22 kDa.

Description

Predicted to enable ubiquitin conjugating enzyme activity. Predicted to be involved in protein polyubiquitination. Predicted to be active in nucleus. Orthologous to human UBE2K (ubiquitin conjugating enzyme E2 K).

Application Notes

Optimal dilution of the Zebrafish Ube2k antibody should be determined by the researcher.

Immunogen

An E.coli-derived zebrafish UBE2Ka/b recombinant protein (amino acids D33-E195) was used as the immunogen for the Zebrafish Ube2k antibody. This antibody will detect the a and b isoforms.

Storage

After reconstitution, the Zebrafish Ube2k antibody can be stored for up to one month at 4°C. For long-term, aliquot and store at -20°C. Avoid repeated freezing and thawing.