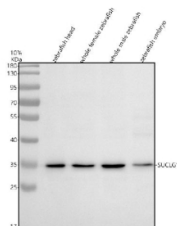


Zebrafish Suc1g1 Antibody / Succinyl-CoA synthetase subunit alpha (RZ1162)

Catalog No.	Formulation	Size
RZ1162	0.5mg/ml if reconstituted with 0.2ml sterile DI water	100 ug

[Bulk quote request](#)

Availability	2-3 weeks
Species Reactivity	Zebrafish
Format	Antigen affinity purified
Clonality	Polyclonal (rabbit origin)
Isotype	Rabbit Ig
Purity	Antigen affinity chromatography
Buffer	Lyophilized from 1X PBS with 2% Trehalose
UniProt	Q66I58
Applications	Western Blot : 0.5-1 ug/ml
Limitations	This Zebrafish Suc1g1 antibody is available for research use only.



Western blot analysis of Suc1g1 protein using Zebrafish Suc1g1 antibody and 1) zebrafish head, 2) whole female zebrafish, 3) whole male zebrafish and 4) zebrafish embryo tissue lysate. Predicted molecular weight ~34 kDa.

Description

Predicted to enable succinate-CoA ligase (ADP-forming) activity and succinate-CoA ligase (GDP-forming) activity. Predicted to be involved in tricarboxylic acid cycle. Predicted to be part of succinate-CoA ligase complex (ADP-forming). Predicted to be active in mitochondrion. Is expressed in several structures, including adaxial cell; alar plate midbrain region; digestive system; musculature system; and solid lens vesicle. Human ortholog(s) of this gene implicated in mitochondrial DNA depletion syndrome 9. Orthologous to human SUC1G1 (succinate-CoA ligase GDP/ADP-forming subunit alpha).

Application Notes

Optimal dilution of the Zebrafish Suc1g1 antibody should be determined by the researcher.

Immunogen

An E.coli-derived zebrafish Suc1g1 recombinant protein (amino acids H3-L324) was used as the immunogen for the Zebrafish Suc1g1 antibody.

Storage

After reconstitution, the Zebrafish Suc1g1 antibody can be stored for up to one month at 4oC. For long-term, aliquot and store at -20oC. Avoid repeated freezing and thawing.