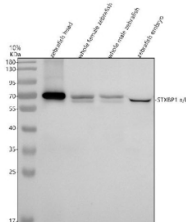


## Zebrafish Stxbp1 Antibody / Stxbp1a / Stxbp1b (RZ1124)

Catalog No.	Formulation	Size
RZ1124	0.5mg/ml if reconstituted with 0.2ml sterile DI water	100 ug

**Bulk quote request**

<b>Availability</b>	2-3 weeks
<b>Species Reactivity</b>	Zebrafish
<b>Format</b>	Antigen affinity purified
<b>Clonality</b>	Polyclonal (rabbit origin)
<b>Isotype</b>	Rabbit Ig
<b>Purity</b>	Antigen affinity chromatography
<b>Buffer</b>	Lyophilized from 1X PBS with 2% Trehalose
<b>UniProt</b>	A0A0R4IQM9, A2BGE0
<b>Applications</b>	Western Blot : 0.5-1 ug/ml
<b>Limitations</b>	This Zebrafish Stxbp1 antibody is available for research use only.



Western blot analysis of Stxbp1a/b protein using Zebrafish Stxbp1 antibody and 1) zebrafish head, 2) whole female zebrafish, 3) whole male zebrafish and 4) zebrafish embryo tissue lysate. Predicted molecular weight ~69 kDa.

### Description

Predicted to enable syntaxin-1 binding activity. Predicted to be involved in intracellular protein transport; presynaptic dense core vesicle exocytosis; and vesicle docking involved in exocytosis. Predicted to act upstream of or within protein transport and vesicle-mediated transport. Predicted to be located in cytoplasm and membrane. Predicted to be active in plasma membrane and secretory granule. Is expressed in nervous system. Human ortholog(s) of this gene implicated in West syndrome and developmental and epileptic encephalopathy 4. Orthologous to human STXBP1 (syntaxin binding protein 1).

### Application Notes

Optimal dilution of the Zebrafish Stxbp1 antibody should be determined by the researcher.

## **Immunogen**

An E.coli-derived zebrafish Stxbp1 recombinant protein (amino acids K184-R227) was used as the immunogen for the Zebrafish Stxbp1 antibody. This antibody will detect the a and b isoforms.

## **Storage**

After reconstitution, the Zebrafish Stxbp1 antibody can be stored for up to one month at 4oC. For long-term, aliquot and store at -20oC. Avoid repeated freezing and thawing.