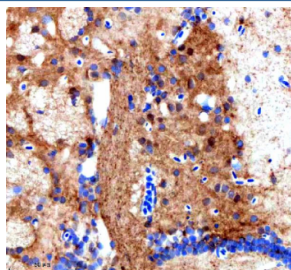


Zebrafish Srsf3 Antibody / Serine/arginine-rich splicing factor 3 / Isoforms a & b (RZ1079)

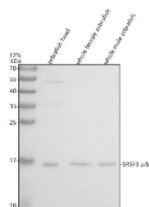
Catalog No.	Formulation	Size
RZ1079	0.5mg/ml if reconstituted with 0.2ml sterile DI water	100 ug

[Bulk quote request](#)

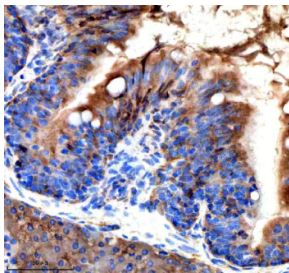
Availability	2-3 weeks
Species Reactivity	Zebrafish
Format	Antigen affinity purified
Clonality	Polyclonal (rabbit origin)
Isotype	Rabbit Ig
Purity	Antigen affinity chromatography
Buffer	Lyophilized from 1X PBS with 2% Trehalose
UniProt	Q801U3, A5WWG4
Localization	Nuclear, cytoplasmic
Applications	Western Blot : 0.5-1 ug/ml Immunohistochemistry (FFPE) : 2-5 ug/ml
Limitations	This Zebrafish Srsf3 antibody is available for research use only.



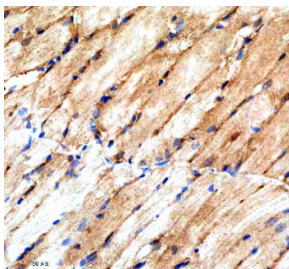
IHC staining of FFPE zebrafish brain tissue with Zebrafish Srsf3 antibody. HIER: boil tissue sections in pH8 EDTA for 20 min and allow to cool before testing.



Western blot analysis of Srsf3a/b protein using Zebrafish Srsf3 antibody and 1) zebrafish head, 2) whole female zebrafish and 3) whole male zebrafish tissue lysate. Predicted molecular weight: 19-20 kDa.



IHC staining of FFPE zebrafish colon tissue with Zebrafish Srsf3 antibody. HIER: boil tissue sections in pH8 EDTA for 20 min and allow to cool before testing.



IHC staining of FFPE zebrafish skeletal muscle tissue with Zebrafish Srsf3 antibody. HIER: boil tissue sections in pH8 EDTA for 20 min and allow to cool before testing.

Description

Predicted to enable mRNA binding activity. Predicted to be involved in mRNA cis splicing, via spliceosome. Predicted to act upstream of or within RNA splicing and mRNA processing. Predicted to be active in nuclear speck. Orthologous to human SRSF3 (serine and arginine rich splicing factor 3).

Application Notes

Optimal dilution of the Zebrafish Srsf3 antibody should be determined by the researcher.

Immunogen

An E.coli-derived zebrafish Srsf3a/b recombinant protein (amino acids P4-A33) was used as the immunogen for the Zebrafish Srsf3 antibody. This antibody will detect the a and b isoforms.

Storage

After reconstitution, the Zebrafish Srsf3 antibody can be stored for up to one month at 4°C. For long-term, aliquot and store at -20°C. Avoid repeated freezing and thawing.