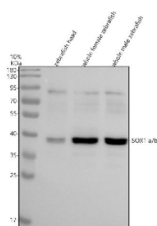


Zebrafish Sox1 Antibody / Sox1a / Sox1b (RZ1116)

Catalog No.	Formulation	Size
RZ1116	0.5mg/ml if reconstituted with 0.2ml sterile DI water	100 ug

Bulk quote request

Availability	2-3 weeks
Species Reactivity	Zebrafish
Format	Antigen affinity purified
Clonality	Polyclonal (rabbit origin)
Isotype	Rabbit Ig
Purity	Antigen affinity chromatography
Buffer	Lyophilized from 1X PBS with 2% Trehalose
UniProt	Q6DGL6, Q2Z1R2
Applications	Western Blot : 0.5-1 ug/ml
Limitations	This Zebrafish Sox1 antibody is available for research use only.



Western blot analysis of SOX1a/b protein using Sox1 antibody and 1) zebrafish head, 2) whole female zebrafish and 3) whole male zebrafish tissue lysate. Predicted molecular weight ~36 kDa.

Description

Contributes to DNA-binding transcription factor activity. Acts upstream of or within determination of left/right symmetry and positive regulation of DNA-binding transcription factor activity. Predicted to be part of transcription regulator complex. Predicted to be active in nucleus. Is expressed in several structures, including forebrain neural keel; lens placode; nervous system; neural plate; and solid lens vesicle. Orthologous to human SOX1 (SRY-box transcription factor 1).

Application Notes

Optimal dilution of the Zebrafish Sox1 antibody should be determined by the researcher.

Immunogen

An E.coli-derived zebrafish Sox1a/b recombinant protein (amino acids M185-Y226) was used as the immunogen for the Zebrafish Sox1 antibody. This antibody will detect the a and b isoforms.

Storage

After reconstitution, the Zebrafish Sox1 antibody can be stored for up to one month at 4oC. For long-term, aliquot and store at -20oC. Avoid repeated freezing and thawing.