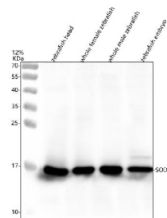


Zebrafish Sod1 Antibody / Superoxide dismutase 1 (RZ1311)

Catalog No.	Formulation	Size
RZ1311	0.5mg/ml if reconstituted with 0.2ml sterile DI water	100 ug

Bulk quote request

Availability	2-3 weeks
Species Reactivity	Zebrafish
Format	Antigen affinity purified
Clonality	Polyclonal (rabbit origin)
Isotype	Rabbit Ig
Purity	Antigen affinity chromatography
Buffer	Lyophilized from 1X PBS with 2% Trehalose
UniProt	O73872
Applications	Western Blot : 0.5-1ug/ml
Limitations	This Zebrafish Sod1 antibody is available for research use only.



Western blot analysis of Sod1 protein using Zebrafish Sod1 antibody and 1) zebrafish head, 2) whole female zebrafish, 3) whole male zebrafish and 4) zebrafish embryo tissue lysate. Predicted molecular weight ~16 kDa.