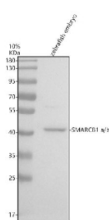


## Zebrafish Smarcb1 Antibody / Smarcb1a / Smarcb1b (RZ1099)

Catalog No.	Formulation	Size
RZ1099	0.5mg/ml if reconstituted with 0.2ml sterile DI water	100 ug

**Bulk quote request**

<b>Availability</b>	2-3 weeks
<b>Species Reactivity</b>	Zebrafish
<b>Format</b>	Antigen affinity purified
<b>Clonality</b>	Polyclonal (rabbit origin)
<b>Isotype</b>	Rabbit Ig
<b>Purity</b>	Antigen affinity chromatography
<b>Buffer</b>	Lyophilized from 1X PBS with 2% Trehalose
<b>UniProt</b>	Q5U379, A0A2R8QP61
<b>Applications</b>	Western Blot : 0.5-1 ug/ml
<b>Limitations</b>	This Zebrafish Smarcb1 antibody is available for research use only.



Western blot analysis of SMARCB1a/b protein using Zebrafish Smarcb1 antibody and zebrafish embryo tissue lysate. The predicted molecular weight of SMARCB1a/b is ~43 kDa.

### Description

Predicted to enable DNA binding activity and transcription coactivator activity. Predicted to be involved in chromatin remodeling and regulation of transcription by RNA polymerase II. Predicted to be located in nuclear chromosome. Predicted to be part of brahma complex; nBAF complex; and npBAF complex. Predicted to be active in nucleus. Human ortholog(s) of this gene implicated in Coffin-Siris syndrome 3; meningioma; rhabdoid cancer; rhabdoid tumor predisposition syndrome 1; and schwannomatosis (multiple). Orthologous to human SMARCB1 (SWI/SNF related BAF chromatin remodeling complex subunit B1).

### Application Notes

Optimal dilution of the Zebrafish Smarcb1 antibody should be determined by the researcher.

## Immunogen

An E.coli-derived zebrafish SMARCB1a/b recombinant protein (amino acids E93-D346) was used as the immunogen for the Zebrafish Smarcb1 antibody. This antibody will detect the a and b isoforms.

## Storage

After reconstitution, the Zebrafish Smarcb1 antibody can be stored for up to one month at 4°C. For long-term, aliquot and store at -20°C. Avoid repeated freezing and thawing.