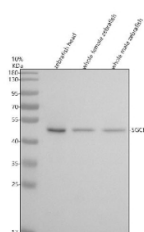


Zebrafish Sgce Antibody / Epsilon-sarcoglycan (RZ1094)

Catalog No.	Formulation	Size
RZ1094	0.5mg/ml if reconstituted with 0.2ml sterile DI water	100 ug

Bulk quote request

Availability	2-3 weeks
Species Reactivity	Zebrafish
Format	Antigen affinity purified
Clonality	Polyclonal (rabbit origin)
Isotype	Rabbit Ig
Purity	Antigen affinity chromatography
Buffer	Lyophilized from 1X PBS with 2% Trehalose
UniProt	Q6DHH1
Applications	Western Blot : 0.5-1 ug/ml
Limitations	This Zebrafish Sgce antibody is available for research use only.



Western blot analysis of Sgce protein using Zebrafish Sgce antibody and 1) zebrafish head, 2) whole female zebrafish and 3) whole male zebrafish tissue lysate. Predicted molecular weight ~50 kDa.

Description

Predicted to enable calcium ion binding activity. Predicted to be located in several cellular components, including Golgi apparatus; dendrite; and sarcolemma. Predicted to be part of sarcoglycan complex. Is expressed in central nervous system; retina; retinal ganglion cell layer; and retinal inner nuclear layer. Human ortholog(s) of this gene implicated in myoclonic dystonia 11. Orthologous to human SGCE (sarcoglycan epsilon).

Application Notes

Optimal dilution of the Zebrafish Sgce antibody should be determined by the researcher.

Immunogen

An E.coli-derived zebrafish Sgce recombinant protein (amino acids V14-E384) was used as the immunogen for the Zebrafish Sgce antibody.

Storage

After reconstitution, the Zebrafish Sgce antibody can be stored for up to one month at 4oC. For long-term, aliquot and store at -20oC. Avoid repeated freezing and thawing.