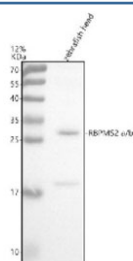


Zebrafish Rbpms2 Antibody / RNA binding protein, mRNA processing factor 2 / Isoforms a & b (RZ1082)

Catalog No.	Formulation	Size
RZ1082	0.5mg/ml if reconstituted with 0.2ml sterile DI water	100 ug

Bulk quote request

Availability	2-3 weeks
Species Reactivity	Zebrafish
Format	Antigen affinity purified
Clonality	Polyclonal (rabbit origin)
Isotype	Rabbit Ig
Purity	Antigen affinity chromatography
Buffer	Lyophilized from 1X PBS with 2% Trehalose
UniProt	Q6DH13, Q7ZUL7
Applications	Western Blot : 0.5-1 ug/ml
Limitations	This Zebrafish Rbpms2 antibody is available for research use only.



Western blot analysis of Rbpms2a/b protein using Zebrafish Rbpms2 antibody and zebrafish head tissue lysate. The predicted molecular weight of Rbpms2a/b is ~22 kDa.

Description

Predicted to enable mRNA binding activity. Acts upstream of or within several processes, including heart contraction; neuron projection morphogenesis; and regulation of retinal ganglion cell axon guidance. Predicted to be located in cytoplasmic stress granule; cytosol; and nucleus. Is expressed in cardiovascular system; gut; mesoderm; pleuroperitoneal region; and retina. Orthologous to human RBPMS2 (RNA binding protein, mRNA processing factor 2).

Application Notes

Optimal dilution of the Zebrafish Rbpms2 antibody should be determined by the researcher.

Immunogen

An E.coli-derived zebrafish Rbpms2a/b recombinant protein (amino acids K105-Q190) was used as the immunogen for the Zebrafish Rbpms2 antibody. This antibody will detect the a and b isoforms.

Storage

After reconstitution, the Zebrafish Rbpms2 antibody can be stored for up to one month at 4oC. For long-term, aliquot and store at -20oC. Avoid repeated freezing and thawing.