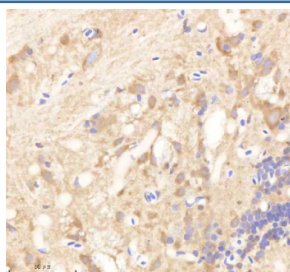


## Zebrafish Psmd6 Antibody / 26S proteasome non-ATPase regulatory subunit 6 (RZ1294)

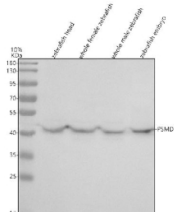
Catalog No.	Formulation	Size
RZ1294	0.5mg/ml if reconstituted with 0.2ml sterile DI water	100 ug

[Bulk quote request](#)

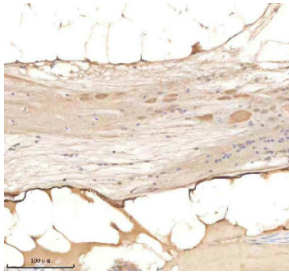
<b>Availability</b>	2-3 weeks
<b>Species Reactivity</b>	Zebrafish
<b>Format</b>	Antigen affinity purified
<b>Clonality</b>	Polyclonal (rabbit origin)
<b>Isotype</b>	Rabbit Ig
<b>Purity</b>	Antigen affinity chromatography
<b>Buffer</b>	Lyophilized from 1X PBS with 2% Trehalose
<b>UniProt</b>	Q7ZWE5
<b>Localization</b>	Nuclear, cytoplasmic, extracellular
<b>Applications</b>	Western Blot : 0.5-1ug/ml Immunohistochemistry (FFPE) : 2-5ug/ml
<b>Limitations</b>	This Zebrafish Psmd6 antibody is available for research use only.



IHC staining of FFPE zebrafish brain tissue with Psmd6 antibody, HRP-labeled secondary and DAB substrate. HIER: boil tissue sections in pH8 EDTA for 20 min and allow to cool before testing.



Western blot analysis of Psmd6 protein using Zebrafish Psmd6 antibody and 1) zebrafish head, 2) whole female zebrafish, 3) whole male zebrafish and 4) zebrafish embryo tissue lysate. Predicted molecular weight ~46 kDa.



IHC staining of FFPE zebrafish spinal tissue with Psmd6 antibody, HRP-labeled secondary and DAB substrate. HIER: boil tissue sections in pH8 EDTA for 20 min and allow to cool before testing.