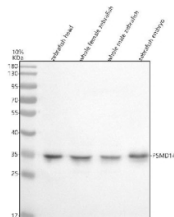


Zebrafish Psmd14 Antibody / 26S proteasome non-ATPase regulatory subunit 14 (RZ1271)

Catalog No.	Formulation	Size
RZ1271	0.5mg/ml if reconstituted with 0.2ml sterile DI water	100 ug

Bulk quote request

Availability	2-3 weeks
Species Reactivity	Zebrafish
Format	Antigen affinity purified
Clonality	Polyclonal (rabbit origin)
Isotype	Rabbit Ig
Purity	Antigen affinity chromatography
Buffer	Lyophilized from 1X PBS with 2% Trehalose
UniProt	A3KNN5
Applications	Western Blot : 0.5-1ug/ml
Limitations	This Zebrafish Psmd14 antibody is available for research use only.



Western blot analysis of Psmd14 protein using Zebrafish Psmd14 antibody and 1) zebrafish head, 2) whole female zebrafish, 3) whole male zebrafish and 4) zebrafish embryo tissue lysate. Predicted molecular weight ~35 kDa.