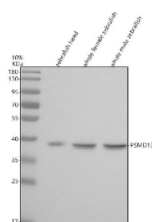


## Zebrafish Psmd13 Antibody / 26S proteasome non-ATPase regulatory subunit 13 (RZ1291)

Catalog No.	Formulation	Size
RZ1291	0.5mg/ml if reconstituted with 0.2ml sterile DI water	100 ug

[Bulk quote request](#)

<b>Availability</b>	2-3 weeks
<b>Species Reactivity</b>	Zebrafish
<b>Format</b>	Antigen affinity purified
<b>Clonality</b>	Polyclonal (rabbit origin)
<b>Isotype</b>	Rabbit Ig
<b>Purity</b>	Antigen affinity chromatography
<b>Buffer</b>	Lyophilized from 1X PBS with 2% Trehalose
<b>UniProt</b>	Q7ZU69
<b>Applications</b>	Western Blot : 0.5-1ug/ml
<b>Limitations</b>	This Zebrafish Psmd13 antibody is available for research use only.



Western blot analysis of Psmd13 protein using Zebrafish Psmd13 antibody and 1) zebrafish head, 2) whole female zebrafish and 3) whole male zebrafish tissue lysate. Predicted molecular weight ~43 kDa.