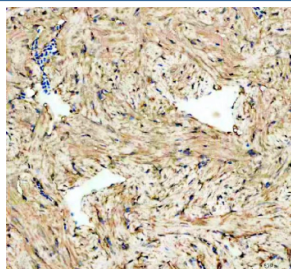


Psmc3 Antibody / Proteasome 26S subunit ATPase 3 / Tbp-1 (RZ1319)

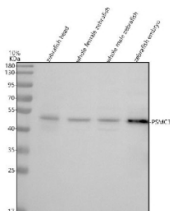
Catalog No.	Formulation	Size
RZ1319	0.5mg/ml if reconstituted with 0.2ml sterile DI water	100 ug

Bulk quote request

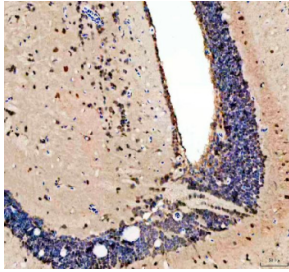
Availability	2-3 weeks
Species Reactivity	Zebrafish
Format	Antigen affinity purified
Clonality	Polyclonal (rabbit origin)
Isotype	Rabbit Ig
Purity	Antigen affinity chromatography
Buffer	Lyophilized from 1X PBS with 2% Trehalose
UniProt	A0A0R4ILA8
Localization	Cytoplasmic, Nuclear
Applications	Western Blot : 0.5-1ug/ml Immunohistochemistry (FFPE) : 2-5ug/ml
Limitations	This Zebrafish Psmc3 antibody is available for research use only.



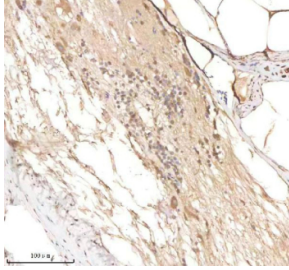
IHC staining of FFPE zebrafish heart tissue with Psmc3 antibody, HRP-labeled secondary and DAB substrate. HIER: boil tissue sections in pH8 EDTA for 20 min and allow to cool before testing.



Western blot analysis of Psmc3 protein using Zebrafish Psmc3 antibody and 1) zebrafish head, 2) whole female zebrafish, 3) whole male zebrafish and 4) zebrafish embryo tissue lysate. Predicted molecular weight ~49 kDa.



IHC staining of FFPE zebrafish brain tissue with Psmc3 antibody, HRP-labeled secondary and DAB substrate. HIER: boil tissue sections in pH8 EDTA for 20 min and allow to cool before testing.



IHC staining of FFPE zebrafish spinal tissue with Psmc3 antibody, HRP-labeled secondary and DAB substrate. HIER: boil tissue sections in pH8 EDTA for 20 min and allow to cool before testing.