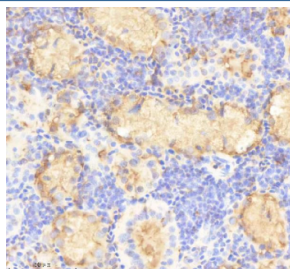


Zebrafish Prox1a Antibody / Prospero homeobox 1a (RZ1280)

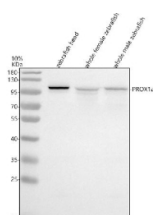
| Catalog No. | Formulation | Size |
|-------------|---|--------|
| RZ1280 | 0.5mg/ml if reconstituted with 0.2ml sterile DI water | 100 ug |

Bulk quote request

| | |
|---------------------------|---|
| Availability | 2-3 weeks |
| Species Reactivity | Zebrafish |
| Format | Antigen affinity purified |
| Clonality | Polyclonal (rabbit origin) |
| Isotype | Rabbit Ig |
| Purity | Antigen affinity chromatography |
| Buffer | Lyophilized from 1X PBS with 2% Trehalose |
| UniProt | F1QAE1 |
| Localization | Nuclear, cytoplasmic |
| Applications | Western Blot : 0.5-1ug/ml Immunohistochemistry (FFPE) : 2-5ug/ml |
| Limitations | This Zebrafish Prox1a antibody is available for research use only. |



IHC staining of FFPE zebrafish kidney tissue with Prox1a antibody, HRP-labeled secondary and DAB substrate. HIER: boil tissue sections in pH8 EDTA for 20 min and allow to cool before testing.



Western blot analysis of Prox1a protein using Zebrafish Prox1a antibody and 1) zebrafish head, 2) whole female zebrafish and 3) whole male zebrafish tissue lysate. Predicted molecular weight ~83 kDa, commonly observed at 80-100 kDa. (human similarity)

