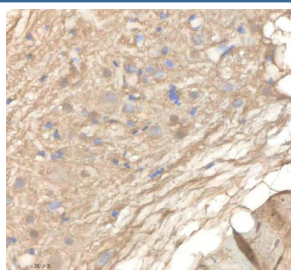


## Zebrafish Ppm1g Antibody / Protein phosphatase 1G (RZ1277)

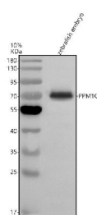
| Catalog No. | Formulation   | Size   |
|-------------|---|--------|
| RZ1277      | 0.5mg/ml if reconstituted with 0.2ml sterile DI water | 100 ug |

**Bulk quote request**

|                           |   |
|---------------------------|---|
| <b>Availability</b>       | 2-3 weeks   |
| <b>Species Reactivity</b> | Zebrafish   |
| <b>Format</b>             | Antigen affinity purified   |
| <b>Clonality</b>          | Polyclonal (rabbit origin)  |
| <b>Isotype</b>            | Rabbit Ig   |
| <b>Purity</b>             | Antigen affinity chromatography                                     |
| <b>Buffer</b>             | Lyophilized from 1X PBS with 2% Trehalose                           |
| <b>UniProt</b>            | F1QJE5  |
| <b>Applications</b>       | Western Blot : 0.5-1ug/ml<br>Immunohistochemistry (FFPE) : 2-5ug/ml |
| <b>Limitations</b>        | This Zebrafish Ppm1g antibody is available for research use only.   |



IHC staining of zebrafish Ppm1g protein using Zebrafish Ppm1g antibody, HRP-labeled secondary and DAB substrate. Ppm1g was detected in a paraffin-embedded section of zebrafish brain tissue. HIER: boil tissue sections in pH8 EDTA for 20 min and allow to cool before testing.



Western blot analysis of Ppm1g protein using Zebrafish Ppm1g antibody and 1) zebrafish embryo tissue lysates. Predicted molecular weight ~58 kDa, but commonly observed at up to ~79 kDa. (human similarity)

