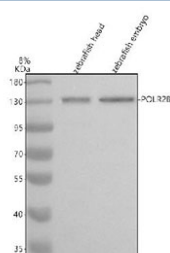


## Zebrafish Polr2b Antibody / DNA-directed RNA polymerase subunit beta (RZ1273)

Catalog No.	Formulation	Size
RZ1273	0.5mg/ml if reconstituted with 0.2ml sterile DI water	100 ug

**Bulk quote request**

<b>Availability</b>	2-3 weeks
<b>Species Reactivity</b>	Zebrafish
<b>Format</b>	Antigen affinity purified
<b>Clonality</b>	Polyclonal (rabbit origin)
<b>Isotype</b>	Rabbit Ig
<b>Purity</b>	Antigen affinity chromatography
<b>Buffer</b>	Lyophilized from 1X PBS with 2% Trehalose
<b>UniProt</b>	A0A8M1N6S0
<b>Applications</b>	Western Blot : 0.5-1ug/ml
<b>Limitations</b>	This Zebrafish Polr2b antibody is available for research use only.



Western blot analysis of Polr2b protein using Zebrafish Polr2b antibody and 1) zebrafish head tissue lysates and 2) zebrafish embryo tissue lysates. Predicted molecular weight ~134 kDa.