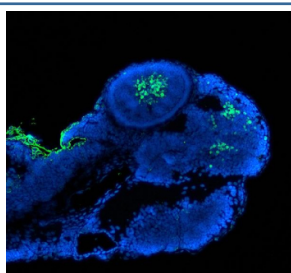


Zebrafish Pax6 Antibody / Pax6a / Pax6b (RZ1200)

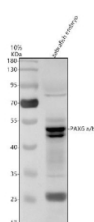
Catalog No.	Formulation	Size
RZ1200	0.5mg/ml if reconstituted with 0.2ml sterile DI water	100 ug

Bulk quote request

Availability	2-3 weeks
Species Reactivity	Zebrafish
Format	Antigen affinity purified
Clonality	Polyclonal (rabbit origin)
Isotype	Rabbit Ig
Purity	Antigen affinity chromatography
Buffer	Lyophilized from 1X PBS with 2% Trehalose
UniProt	P26630
Localization	Nuclear
Applications	Western Blot : 0.5-1ug/ml Immunofluorescence : 5ug/ml
Limitations	This Zebrafish Pax6 antibody is available for research use only.



Immunofluorescent staining of PAX6 protein using FFPE zebrafish embryo tissue and Zebrafish Pax6 antibody (green) and DAPI nuclear stain (blue). HIER: steam section in pH8 EDTA buffer for 20 min.



Western blot analysis of Pax6 protein using Zebrafish Pax6 antibody and zebrafish embryo tissue lysates. Predicted molecular weight ~48 kDa.

