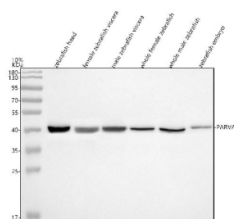


Zebrafish Parvin alpha Antibody / Parva / Actopaxin (RZ1085)

Catalog No.	Formulation	Size
RZ1085	0.5mg/ml if reconstituted with 0.2ml sterile DI water	100 ug

Bulk quote request

Availability	2-3 weeks
Species Reactivity	Zebrafish
Format	Antigen affinity purified
Clonality	Polyclonal (rabbit origin)
Isotype	Rabbit Ig
Purity	Antigen affinity chromatography
Buffer	Lyophilized from 1X PBS with 2% Trehalose
UniProt	Q6DRM4
Applications	Western Blot : 0.5-1 ug/ml
Limitations	This Zebrafish Parvin alpha antibody is available for research use only.



Western blot analysis of Alpha Parvin/Actopaxin/PARVA protein using Zebrafish Parvin alpha antibody and 1) zebrafish head, 2) female zebrafish viscera, 3) male zebrafish viscera, 4) whole female zebrafish, 5) whole male zebrafish and 6) zebrafish embryo tissue lysate. Predicted molecular weight ~42 kDa.

Description

Parvin alpha is a protein that in humans is encoded by the PARVA gene. It is located on 11p15.3. PARVA belongs to the parvin family of actin-binding proteins. Parvins are associated with focal contacts and contain calponin homology domains that bind to actin filaments. The encoded protein is part of the integrin-linked kinase signaling complex and plays a role in cell adhesion, motility and survival.

Application Notes

Optimal dilution of the Zebrafish Parvin alpha antibody should be determined by the researcher.

Immunogen

An E.coli-derived zebrafish Alpha Parvin/Actopaxin/PARVA recombinant protein (amino acids E150-D248) was used as the immunogen for the Zebrafish Parvin alpha antibody.

Storage

After reconstitution, the Zebrafish Parvin alpha antibody can be stored for up to one month at 4oC. For long-term, aliquot and store at -20oC. Avoid repeated freezing and thawing.