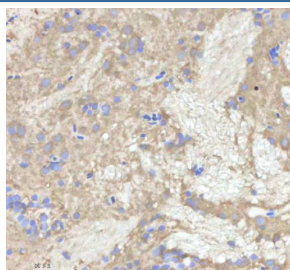


## Zebrafish Npepps Antibody / Aminopeptidase (RZ1253)

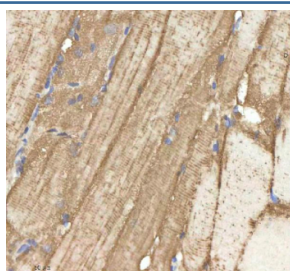
Catalog No.	Formulation	Size
RZ1253	0.5mg/ml if reconstituted with 0.2ml sterile DI water	100 ug

**Bulk quote request**

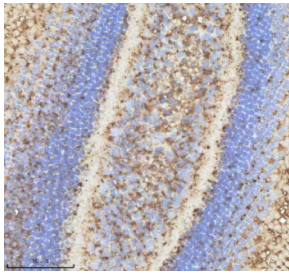
<b>Availability</b>	2-3 weeks
<b>Species Reactivity</b>	Zebrafish
<b>Format</b>	Antigen affinity purified
<b>Clonality</b>	Polyclonal (rabbit origin)
<b>Isotype</b>	Rabbit Ig
<b>Purity</b>	Antigen affinity chromatography
<b>Buffer</b>	Lyophilized from 1X PBS with 2% Trehalose
<b>UniProt</b>	A0A8M1NSE3
<b>Localization</b>	Cytoplasmic, Nuclear
<b>Applications</b>	Immunohistochemistry (FFPE) : 2-5ug/ml
<b>Limitations</b>	This Zebrafish Npepps antibody is available for research use only.



IHC staining of zebrafish Npepps protein using Zebrafish Npepps antibody, HRP-labeled secondary and DAB substrate. Npepps was detected in a paraffin-embedded section of zebrafish brain tissue. HIER: boil tissue sections in pH8 EDTA for 20 min and allow to cool before testing.



IHC staining of zebrafish Npepps protein using Zebrafish Npepps antibody, HRP-labeled secondary and DAB substrate. Npepps was detected in a paraffin-embedded section of zebrafish muscle tissue. HIER: boil tissue sections in pH8 EDTA for 20 min and allow to cool before testing.



IHC staining of zebrafish Npepps protein using Zebrafish Npepps antibody, HRP-labeled secondary and DAB substrate. Npepps was detected in a paraffin-embedded section of zebrafish eye tissue. HIER: boil tissue sections in pH8 EDTA for 20 min and allow to cool before testing.