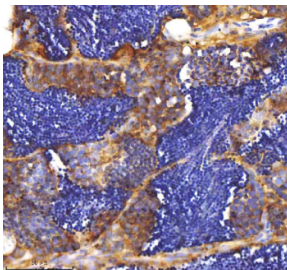


Zebrafish Mpeg1 Antibody / Mpeg1.1 / Macrophage-expressed gene 1 (RZ1240)

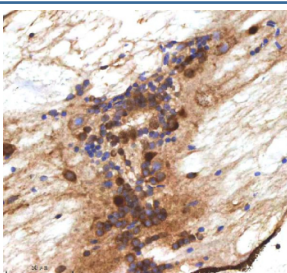
Catalog No.	Formulation	Size
RZ1240	0.5mg/ml if reconstituted with 0.2ml sterile DI water	100 ug

[Bulk quote request](#)

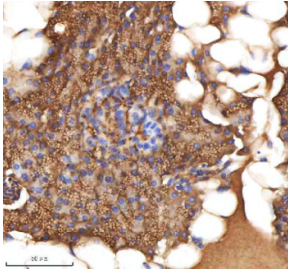
Availability	2-3 weeks
Species Reactivity	Zebrafish
Format	Antigen affinity purified
Clonality	Polyclonal (rabbit origin)
Isotype	Rabbit Ig
Purity	Antigen affinity chromatography
Buffer	Lyophilized from 1X PBS with 2% Trehalose
UniProt	Q7SXE0
Localization	Cytoplasm
Applications	Immunohistochemistry (FFPE) : 2-5ug/ml
Limitations	This Zebrafish Mpeg1 antibody is available for research use only.



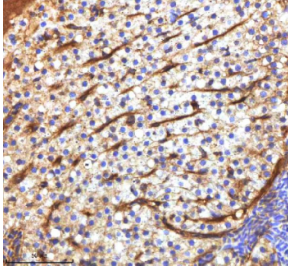
IHC staining of zebrafish Mpeg1 protein using Zebrafish Mpeg1 antibody, HRP-labeled secondary and DAB substrate. Mpeg1 was detected in a paraffin-embedded section of zebrafish testis tissue. HIER: boil tissue sections in pH8 EDTA for 20 min and allow to cool before testing.



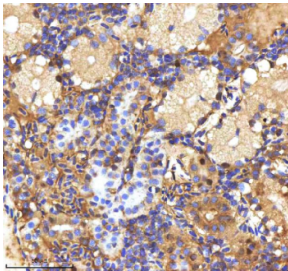
IHC staining of zebrafish Mpeg1 protein using Zebrafish Mpeg1 antibody, HRP-labeled secondary and DAB substrate. Mpeg1 was detected in a paraffin-embedded section of zebrafish spinal cord tissue. HIER: boil tissue sections in pH8 EDTA for 20 min and allow to cool before testing.



IHC staining of zebrafish MPEG1 protein using Zebrafish MPEG1 antibody, HRP-labeled secondary and DAB substrate. MPEG1 was detected in a paraffin-embedded section of zebrafish pancreas tissue. HIER: boil tissue sections in pH8 EDTA for 20 min and allow to cool before testing.



IHC staining of zebrafish Mpeg1 protein using Zebrafish Mpeg1 antibody, HRP-labeled secondary and DAB substrate. Mpeg1 was detected in a paraffin-embedded section of zebrafish liver tissue. HIER: boil tissue sections in pH8 EDTA for 20 min and allow to cool before testing.



IHC staining of zebrafish Mpeg1 protein using Zebrafish Mpeg1 antibody, HRP-labeled secondary and DAB substrate. Mpeg1 was detected in a paraffin-embedded section of zebrafish kidney tissue. HIER: boil tissue sections in pH8 EDTA for 20 min and allow to cool before testing.