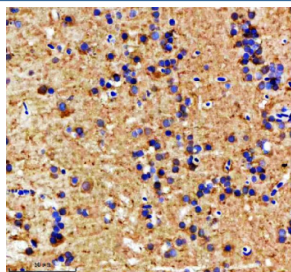


## Zebrafish Mat2a Antibody / Methionine adenosyltransferase 2 / Isoforms a & b (RZ1065)

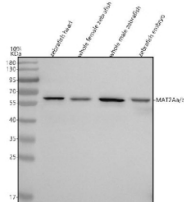
Catalog No.	Formulation	Size
RZ1065	0.5mg/ml if reconstituted with 0.2ml sterile DI water	100 ug

[Bulk quote request](#)

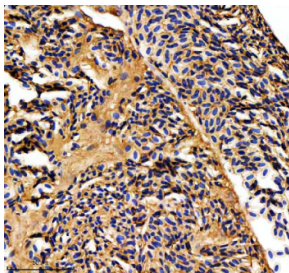
<b>Availability</b>	2-3 weeks
<b>Species Reactivity</b>	Zebrafish
<b>Format</b>	Antigen affinity purified
<b>Clonality</b>	Polyclonal (rabbit origin)
<b>Isotype</b>	Rabbit Ig
<b>Purity</b>	Antigen affinity chromatography
<b>Buffer</b>	Lyophilized from 1X PBS with 2% Trehalose
<b>UniProt</b>	F1QYU7, A0A8M6YZ65
<b>Localization</b>	Cytoplasm
<b>Applications</b>	Western Blot : 0.5-1 ug/ml Immunohistochemistry (FFPE) : 2-5 ug/ml
<b>Limitations</b>	This Zebrafish Mat2a antibody is available for research use only.



IHC staining of FFPE zebrafish brain tissue with Zebrafish Mat2a antibody. HIER: boil tissue sections in pH8 EDTA for 20 min and allow to cool before testing.



Western blot analysis of Mat2aa/b protein using Zebrafish Mat2a antibody and 1) zebrafish head, 2) whole female zebrafish, 3) whole male zebrafish and 4) zebrafish embryo tissue lysate. Expected molecular weight ~44 kDa.



IHC staining of FFPE zebrafish heart tissue with Zebrafish Mat2a antibody. HIER: boil tissue sections in pH8 EDTA for 20 min and allow to cool before testing.

## Description

The protein encoded by this gene catalyzes the production of S-adenosylmethionine (AdoMet) from methionine and ATP. AdoMet is the key methyl donor in cellular processes.

## Application Notes

Optimal dilution of the Zebrafish Mat2a antibody should be determined by the researcher.

## Immunogen

An E.coli-derived zebrafish Mat2aa/b recombinant protein (amino acids M1-A229) was used as the immunogen for the Zebrafish Mat2a antibody. This antibody will detect the a and b isoforms.

## Storage

After reconstitution, the Zebrafish Mat2a antibody can be stored for up to one month at 4oC. For long-term, aliquot and store at -20oC. Avoid repeated freezing and thawing.