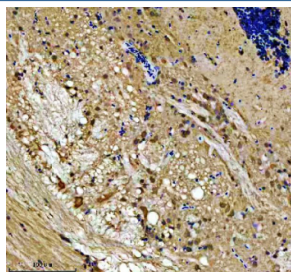


## Zebrafish Lsg1 Antibody / Large subunit GTPase 1 (RZ1155)

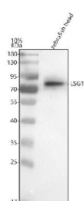
Catalog No.	Formulation	Size
RZ1155	0.5mg/ml if reconstituted with 0.2ml sterile DI water	100 ug

**Bulk quote request**

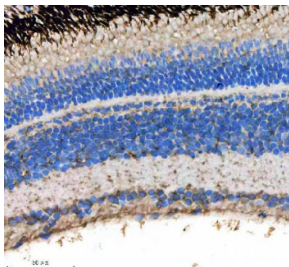
<b>Availability</b>	2-3 weeks
<b>Species Reactivity</b>	Zebrafish
<b>Format</b>	Antigen affinity purified
<b>Clonality</b>	Polyclonal (rabbit origin)
<b>Isotype</b>	Rabbit Ig
<b>Purity</b>	Antigen affinity chromatography
<b>Buffer</b>	Lyophilized from 1X PBS with 2% Trehalose
<b>UniProt</b>	Q6NY89
<b>Localization</b>	Cytoplasm
<b>Applications</b>	Western Blot : 0.5-1 ug/ml Immunohistochemistry (FFPE) : 2-5 ug/ml
<b>Limitations</b>	This Zebrafish Lsg1 antibody is available for research use only.



Immunohistochemical analysis of Lsg1 protein using Zebrafish Lsg1 antibody, HRP secondary and DAB substrate with paraffin-embedded zebrafish brain tissue. HIER: boil tissue sections in pH8 EDTA for 20 min and allow to cool before testing.



Western blot analysis of Lsg1 protein using Zebrafish Lsg1 antibody and zebrafish head tissue lysate. The predicted molecular weight of LSG1 is ~75 kDa.



Immunohistochemical analysis of Lsg1 protein using Zebrafish Lsg1 antibody, HRP secondary and DAB substrate with paraffin-embedded zebrafish eye tissue. HIER: boil tissue sections in pH8 EDTA for 20 min and allow to cool before testing.

## Description

Large subunit GTPase 1 homolog is an enzyme that in humans is encoded by the LSG1 gene. This gene encodes a protein related to the yeast large subunit GTPase 1. The encoded protein is necessary for cell viability and may localize in the endoplasmic reticulum, nucleus and cytoplasm.

## Application Notes

Optimal dilution of the Zebrafish Lsg1 antibody should be determined by the researcher.

## Immunogen

An E.coli-derived zebrafish Lsg1 recombinant protein (amino acids R21-G467) was used as the immunogen for the Zebrafish Lsg1 antibody.

## Storage

After reconstitution, the Zebrafish Lsg1 antibody can be stored for up to one month at 4°C. For long-term, aliquot and store at -20°C. Avoid repeated freezing and thawing.