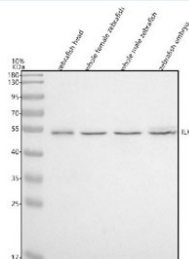


Zebrafish Integrin-linked kinase Antibody / ILK (RZ1044)

Catalog No.	Formulation	Size
RZ1044	0.5mg/ml if reconstituted with 0.2ml sterile DI water	100 ug

Bulk quote request

Availability	2-3 weeks
Species Reactivity	Zebrafish
Format	Antigen affinity purified
Clonality	Polyclonal (rabbit origin)
Isotype	Rabbit Ig
Purity	Antigen affinity chromatography
Buffer	Lyophilized from 1X PBS with 2% Trehalose
UniProt	Q6PHD6
Localization	Cytoplasm
Applications	Western Blot : 0.5-1 ug/ml
Limitations	This Zebrafish Integrin-linked kinase antibody is available for research use only.



Western blot analysis of Integrin-linked kinase protein using Integrin-linked kinase antibody and 1) zebrafish head, 2) whole female zebrafish, 3) whole male zebrafish and 4) zebrafish embryo tissue lysate. Expected molecular weight: 51-59 kDa.

Description

ILK, also known as Integrin-linked kinase, is a serine-threonine protein kinase. Transduction of extracellular matrix signals through integrins influences intracellular and extracellular functions, and appears to require interaction of integrin cytoplasmic domains with cellular proteins. Integrin-linked kinase (ILK) interacts with the cytoplasmic domain of beta-1 integrin. This gene was initially described to encode a serine/ threonine protein kinase with 4 ankyrin-like repeats, which associates with the cytoplasmic domain of beta integrins and acts as a proximal receptor kinase regulating integrin-mediated signal transduction. Multiple alternatively spliced transcript variants encoding the same protein have been found for this gene. Recent results showed that ILK contains 5 ankyrin-like repeats, and that the C-terminal kinase domain is

actually a pseudo-kinase with adaptor function.

Application Notes

Optimal dilution of the Zebrafish Integrin-linked kinase antibody should be determined by the researcher.

Immunogen

An E.coli-derived zebrafish Integrin-linked kinase recombinant protein (amino acids M1-H203) was used as the immunogen for the Zebrafish Integrin-linked kinase antibody.

Storage

After reconstitution, the Zebrafish Integrin-linked kinase antibody can be stored for up to one month at 4oC. For long-term, aliquot and store at -20oC. Avoid repeated freezing and thawing.