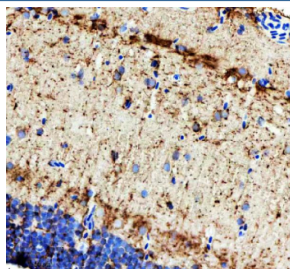


Zebrafish ILK Antibody / Integrin-linked kinase (RZ1004)

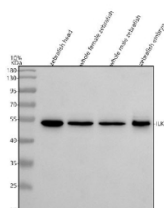
Catalog No.	Formulation	Size
RZ1004	0.5mg/ml if reconstituted with 0.2ml sterile DI water	100 ug

Bulk quote request

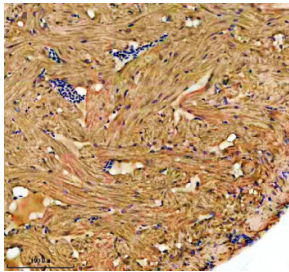
Availability	2-3 weeks
Species Reactivity	Zebrafish
Format	Antigen affinity purified
Clonality	Polyclonal (rabbit origin)
Isotype	Rabbit Ig
Purity	Antigen affinity chromatography
Buffer	Lyophilized from 1X PBS with 2% Trehalose
UniProt	Q6PHD6
Localization	Cytoplasm
Applications	Western Blot : 0.5-1 ug/ml Immunohistochemistry (FFPE) : 2-5 ug/ml
Limitations	This Zebrafish ILK antibody is available for research use only.



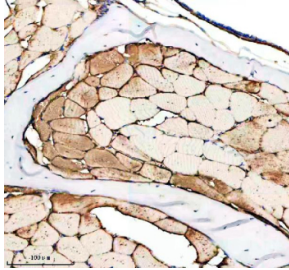
IHC staining of FFPE zebrafish brain tissue with Zebrafish ILK antibody. HIER: boil tissue sections in pH8 EDTA for 20 min and allow to cool before testing.



Western blot analysis of ILK protein using ILK antibody and 1) zebrafish head 2) whole female zebrafish, 3) whole male zebrafish and 4) zebrafish embryo tissue lysate. Expected molecular weight: 51-59 kDa.



IHC staining of FFPE zebrafish heart tissue with Zebrafish ILK antibody. HIER: boil tissue sections in pH8 EDTA for 20 min and allow to cool before testing.



IHC staining of FFPE zebrafish muscle tissue with Zebrafish ILK antibody. HIER: boil tissue sections in pH8 EDTA for 20 min and allow to cool before testing.

Description

ILK, also known as Integrin-linked kinase, is a serine-threonine protein kinase. Transduction of extracellular matrix signals through integrins influences intracellular and extracellular functions, and appears to require interaction of integrin cytoplasmic domains with cellular proteins. Integrin-linked kinase (ILK) interacts with the cytoplasmic domain of beta-1 integrin. This gene was initially described to encode a serine/ threonine protein kinase with 4 ankyrin-like repeats, which associates with the cytoplasmic domain of beta integrins and acts as a proximal receptor kinase regulating integrin-mediated signal transduction. Multiple alternatively spliced transcript variants encoding the same protein have been found for this gene. Recent results showed that ILK contains 5 ankyrin-like repeats, and that the C-terminal kinase domain is actually a pseudo-kinase with adaptor function.

Application Notes

Optimal dilution of the Zebrafish ILK antibody should be determined by the researcher.

Immunogen

An E.coli-derived zebrafish ILK recombinant protein (amino acids M1-K452) was used as the immunogen for the Zebrafish ILK antibody.

Storage

After reconstitution, the Zebrafish ILK antibody can be stored for up to one month at 4oC. For long-term, aliquot and store at -20oC. Avoid repeated freezing and thawing.