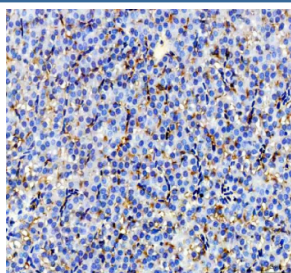


Zebrafish Igf2a Antibody / Igf2 / Insulin-like growth factor 2 (RZ1199)

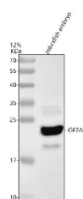
Catalog No.	Formulation	Size
RZ1199	0.5mg/ml if reconstituted with 0.2ml sterile DI water	100 ug

Bulk quote request

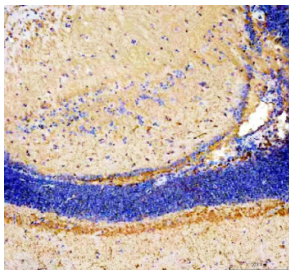
Availability	2-3 weeks
Species Reactivity	Zebrafish
Format	Antigen affinity purified
Clonality	Polyclonal (rabbit origin)
Isotype	Rabbit Ig
Purity	Antigen affinity chromatography
Buffer	Lyophilized from 1X PBS with 2% Trehalose
UniProt	Q9PUD0
Applications	Western Blot : 0.5-1ug/ml Immunohistochemistry (FFPE) : 2-5ug/ml
Limitations	This Zebrafish Igf2a antibody is available for research use only.



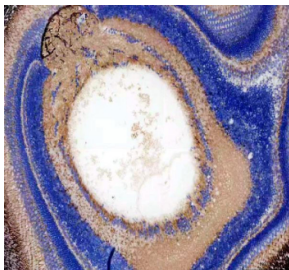
IHC staining of zebrafish Igf2a protein using Zebrafish Igf2a antibody, HRP-labeled secondary and DAB substrate. Igf2a was detected in a paraffin-embedded section of zebrafish liver tissue. HIER: boil tissue sections in pH8 EDTA for 20 min and allow to cool before testing.



Western blot analysis of Igf2a protein using Zebrafish Igf2a antibody and 1) zebrafish embryo tissue lysates. Predicted molecular weight ~23 kDa.



IHC staining of zebrafish Igf2a protein using Zebrafish Igf2a antibody, HRP-labeled secondary and DAB substrate. Igf2a was detected in a paraffin-embedded section of zebrafish brain tissue. HIER: boil tissue sections in pH8 EDTA for 20 min and allow to cool before testing.



IHC staining of zebrafish Igf2a protein using Zebrafish Igf2a antibody, HRP-labeled secondary and DAB substrate. Igf2a was detected in a paraffin-embedded section of zebrafish eye tissue. HIER: boil tissue sections in pH8 EDTA for 20 min and allow to cool before testing.