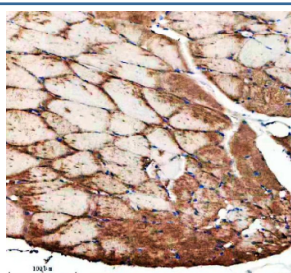


Zebrafish Ide Antibody / Insulin degrading enzyme (RZ1014)

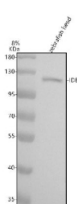
Catalog No.	Formulation	Size
RZ1014	0.5mg/ml if reconstituted with 0.2ml sterile DI water	100 ug

Bulk quote request

Availability	2-3 weeks
Species Reactivity	Zebrafish
Format	Antigen affinity purified
Clonality	Polyclonal (rabbit origin)
Isotype	Rabbit Ig
Purity	Antigen affinity chromatography
Buffer	Lyophilized from 1X PBS with 2% Trehalose
UniProt	A0A0R4IL71
Localization	Cytoplasm
Applications	Western Blot : 0.5-1 ug/ml Immunohistochemistry (FFPE) : 2-5 ug/ml
Limitations	This Zebrafish Ide antibody is available for research use only.



Immunohistochemical analysis of Ide protein using Zebrafish Ide antibody and paraffin-embedded zebrafish muscle tissue. HIER: boil tissue sections in pH8 EDTA for 20 min and allow to cool before testing.



Western blot analysis of Ide protein using Zebrafish Ide antibody and zebrafish head tissue lysate. The predicted molecular weight of Ide is 118 kDa.

Description

Insulin-degrading enzyme, also known as IDE, is a zinc metallopeptidase that degrades intracellular insulin, and thereby terminates insulin's activity, as well as participating in intercellular peptide signaling by degrading diverse peptides such as glucagon, amylin, bradykinin, and kallidin. The preferential affinity of this enzyme for insulin results in insulin-mediated inhibition of the degradation of other peptides such as beta-amyloid. Deficiencies in this protein's function are associated with Alzheimer's disease and type 2 diabetes mellitus but mutations in this gene have not been shown to be causative for these diseases. This protein localizes primarily to the cytoplasm but in some cell types localizes to the extracellular space, cell membrane, peroxisome, and mitochondrion. Alternative splicing results in multiple transcript variants encoding distinct isoforms.

Application Notes

Optimal dilution of the Zebrafish Ide antibody should be determined by the researcher.

Immunogen

An E.coli-derived zebrafish Ide recombinant protein (amino acids F464-K735) was used as the immunogen for the Zebrafish Ide antibody.

Storage

After reconstitution, the Zebrafish Ide antibody can be stored for up to one month at 4°C. For long-term, aliquot and store at -20°C. Avoid repeated freezing and thawing.