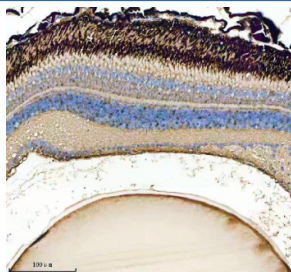


Zebrafish Gnb1 Antibody / Gnb1b (RZ1045)

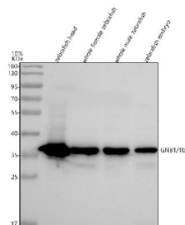
Catalog No.	Formulation	Size
RZ1045	0.5mg/ml if reconstituted with 0.2ml sterile DI water	100 ug

Bulk quote request

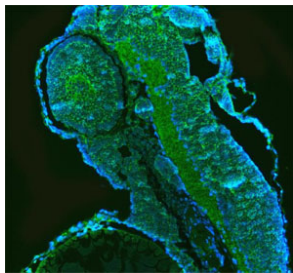
Availability	2-3 weeks
Species Reactivity	Zebrafish
Format	Antigen affinity purified
Clonality	Polyclonal (rabbit origin)
Isotype	Rabbit Ig
Purity	Antigen affinity chromatography
Buffer	Lyophilized from 1X PBS with 2% Trehalose
UniProt	Q6PH57
Localization	Cytoplasm
Applications	Western Blot : 0.5-1 ug/ml Immunohistochemistry (FFPE) : 2-5 ug/ml Immunofluorescence : 5ug/ml
Limitations	This Zebrafish Gnb1 antibody is available for research use only.



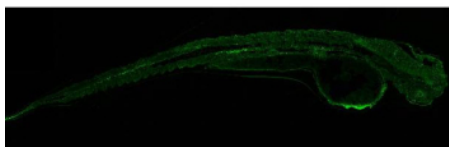
IHC staining of FFPE zebrafish eye tissue with Zebrafish Gnb1 antibody. HIER: boil tissue sections in pH8 EDTA for 20 min and allow to cool before testing.



Western blot analysis of Gnb1/1b protein using Zebrafish Gnb1 antibody and 1) zebrafish head, 2) whole female zebrafish, 3) whole male zebrafish and 4) zebrafish embryo tissue lysate. Expected molecular weight ~37 kDa.



Immunofluorescent staining of FFPE zebrafish embryo tissue with Zebrafish Gnb1 antibody (green) and DAPI nuclear stain (blue). HIER: steam section in pH8 EDTA buffer for 20 min.



Immunofluorescent staining of FFPE zebrafish embryo tissue with Zebrafish Gnb1 antibody. HIER: steam section in pH8 EDTA buffer for 20 min.

Description

Guanine nucleotide-binding protein G(I)/G(S)/G(T) subunit beta-1 is a protein that in humans is encoded by the GNB1 gene. Heterotrimeric guanine nucleotide-binding proteins (G proteins), which integrate signals between receptors and effector proteins, are composed of an alpha, a beta, and a gamma subunit. These subunits are encoded by families of related genes. This gene encodes a beta subunit. Beta subunits are important regulators of alpha subunits, as well as of certain signal transduction receptors and effectors. This gene uses alternative polyadenylation signals.

Application Notes

Optimal dilution of the Zebrafish Gnb1 antibody should be determined by the researcher.

Immunogen

An E.coli-derived zebrafish Gnb1/1b recombinant protein (amino acids S2-H62) was used as the immunogen for the Zebrafish Gnb1 antibody.

Storage

After reconstitution, the Zebrafish Gnb1 antibody can be stored for up to one month at 4oC. For long-term, aliquot and store at -20oC. Avoid repeated freezing and thawing.