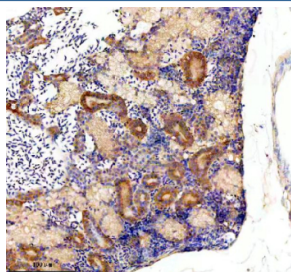


Zebrafish Glutamine synthetase Antibody / Glula / Glulb (RZ1145)

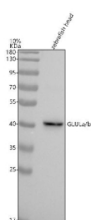
Catalog No.	Formulation	Size
RZ1145	0.5mg/ml if reconstituted with 0.2ml sterile DI water	100 ug

Bulk quote request

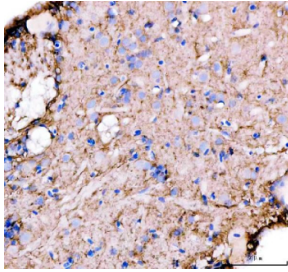
Availability	2-3 weeks
Species Reactivity	Zebrafish
Format	Antigen affinity purified
Clonality	Polyclonal (rabbit origin)
Isotype	Rabbit Ig
Purity	Antigen affinity chromatography
Buffer	Lyophilized from 1X PBS with 2% Trehalose
UniProt	Q7T2P7
Localization	Cytoplasm
Applications	Western Blot : 0.5-1 ug/ml Immunohistochemistry (FFPE) : 2-5 ug/ml
Limitations	This Zebrafish Glutamine synthetase antibody is available for research use only.



Immunohistochemical analysis of Glula/b protein using Zebrafish Glutamine synthetase antibody and paraffin-embedded zebrafish kidney tissue. HIER: boil tissue sections in pH8 EDTA for 20 min and allow to cool before testing.



Western blot analysis of Glula/b protein using Zebrafish Glutamine synthetase antibody and zebrafish head tissue lysate. The predicted molecular weight of GLULa/b is ~42 kDa.



Immunohistochemical analysis of Glula/b protein using Zebrafish Glutamine synthetase antibody and paraffin-embedded zebrafish brain tissue. HIER: boil tissue sections in pH8 EDTA for 20 min and allow to cool before testing.

Description

The protein encoded by this gene belongs to the glutamine synthetase family. It catalyzes the synthesis of glutamine from glutamate and ammonia in an ATP-dependent reaction. This protein plays a role in ammonia and glutamate detoxification, acid-base homeostasis, cell signaling, and cell proliferation. Glutamine is an abundant amino acid, and is important to the biosynthesis of several amino acids, pyrimidines, and purines. Mutations in this gene are associated with congenital glutamine deficiency, and overexpression of this gene was observed in some primary liver cancer samples. There are six pseudogenes of this gene found on chromosomes 2, 5, 9, 11, and 12. Alternative splicing results in multiple transcript variants.

Application Notes

Optimal dilution of the Zebrafish Glutamine synthetase antibody should be determined by the researcher.

Immunogen

An E.coli-derived zebrafish Glula/b recombinant protein (amino acids N74-Y371) was used as the immunogen for the Zebrafish Glutamine synthetase antibody.

Storage

After reconstitution, the Zebrafish Glutamine synthetase antibody can be stored for up to one month at 4°C. For long-term, aliquot and store at -20°C. Avoid repeated freezing and thawing.