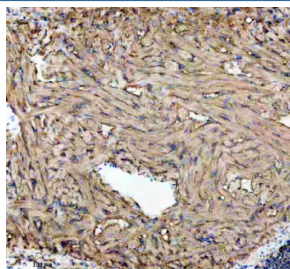


## Zebrafish Gls Antibody / Glutaminase / Isoforms a & b (RZ1047)

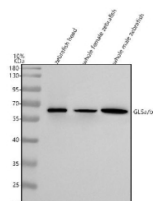
Catalog No.	Formulation	Size
RZ1047	0.5mg/ml if reconstituted with 0.2ml sterile DI water	100 ug

**Bulk quote request**

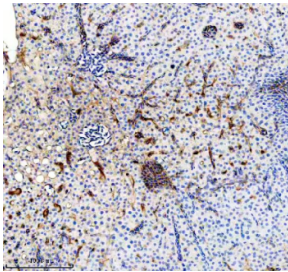
<b>Availability</b>	2-3 weeks
<b>Species Reactivity</b>	Zebrafish
<b>Format</b>	Antigen affinity purified
<b>Clonality</b>	Polyclonal (rabbit origin)
<b>Isotype</b>	Rabbit Ig
<b>Purity</b>	Antigen affinity chromatography
<b>Buffer</b>	Lyophilized from 1X PBS with 2% Trehalose
<b>UniProt</b>	A0A8M9PRT8
<b>Localization</b>	Cytoplasm
<b>Applications</b>	Western Blot : 0.5-1 ug/ml Immunohistochemistry (FFPE) : 2-5 ug/ml
<b>Limitations</b>	This Zebrafish Gls antibody is available for research use only.



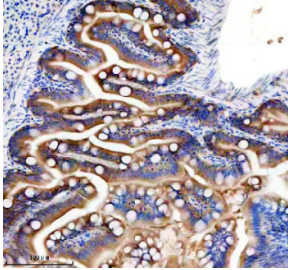
IHC staining of FFPE zebrafish heart tissue with Zebrafish Gls antibody. HIER: boil tissue sections in pH8 EDTA for 20 min and allow to cool before testing.



Western blot analysis of Gls/a/b protein using Zebrafish Gls antibody and 1) zebrafish head, 2) whole female zebrafish and 3) whole male zebrafish tissue lysate. Predicted molecular weight: ~ 36 kDa (isoform a) and ~63 kDa (isoform b).



IHC staining of FFPE zebrafish bile duct tissue with Zebrafish Gls antibody. HIER: boil tissue sections in pH8 EDTA for 20 min and allow to cool before testing.



IHC staining of FFPE zebrafish colon tissue with Zebrafish Gls antibody. HIER: boil tissue sections in pH8 EDTA for 20 min and allow to cool before testing.

## Description

This gene encodes the K-type mitochondrial glutaminase. The encoded protein is an phosphate-activated amidohydrolase that catalyzes the hydrolysis of glutamine to glutamate and ammonia. This protein is primarily expressed in the brain and kidney plays an essential role in generating energy for metabolism, synthesizing the brain neurotransmitter glutamate and maintaining acid-base balance in the kidney. Alternate splicing results in multiple transcript variants.

## Application Notes

Optimal dilution of the Zebrafish Gls antibody should be determined by the researcher.

## Immunogen

An E.coli-derived zebrafish Glsa/b recombinant protein (amino acids K53-S312) was used as the immunogen for the Zebrafish Gls antibody. This antibody will detect the a and b isoforms.

## Storage

After reconstitution, the Zebrafish Gls antibody can be stored for up to one month at 4oC. For long-term, aliquot and store at -20oC. Avoid repeated freezing and thawing.