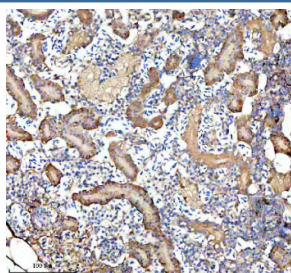


## Zebrafish Gipc1 Antibody / GAIP c-terminus interacting protein 1 (RZ1098)

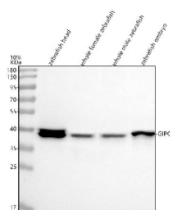
Catalog No.	Formulation	Size
RZ1098	0.5mg/ml if reconstituted with 0.2ml sterile DI water	100 ug

**Bulk quote request**

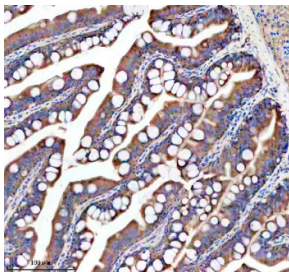
<b>Availability</b>	2-3 weeks
<b>Species Reactivity</b>	Zebrafish
<b>Format</b>	Antigen affinity purified
<b>Clonality</b>	Polyclonal (rabbit origin)
<b>Isotype</b>	Rabbit Ig
<b>Purity</b>	Antigen affinity chromatography
<b>Buffer</b>	Lyophilized from 1X PBS with 2% Trehalose
<b>UniProt</b>	Q6B337
<b>Applications</b>	Western Blot : 0.5-1 ug/ml Immunohistochemistry (FFPE) : 2-5 ug/ml
<b>Limitations</b>	This Zebrafish Gipc1 antibody is available for research use only.



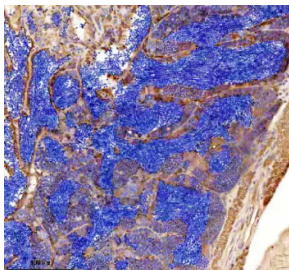
IHC staining of FFPE zebrafish kidney tissue with Zebrafish Gipc1 antibody. HIER: boil tissue sections in pH8 EDTA for 20 min and allow to cool before testing.



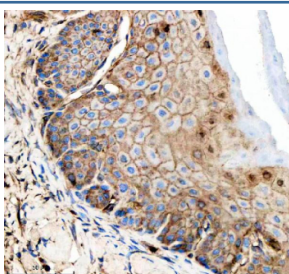
Western blot analysis of Gipc1 protein using Gipc1 antibody and 1) zebrafish head, 2) whole female zebrafish, 3) whole male zebrafish and 4) zebrafish embryo tissue lysate. Predicted molecular weight ~36 kDa.



IHC staining of FFPE zebrafish colon tissue with Zebrafish Gipc1 antibody. HIER: boil tissue sections in pH8 EDTA for 20 min and allow to cool before testing.



IHC staining of FFPE zebrafish testis tissue with Zebrafish Gipc1 antibody. HIER: boil tissue sections in pH8 EDTA for 20 min and allow to cool before testing.



IHC staining of FFPE zebrafish esophagus tissue with Zebrafish Gipc1 antibody. HIER: boil tissue sections in pH8 EDTA for 20 min and allow to cool before testing.

## Description

GIPC PDZ domain containing family, member 1 (GIPC1) is a protein that in humans is encoded by the GIPC1 gene. GIPC1 is a scaffolding protein that regulates cell surface receptor expression and trafficking.

## Application Notes

Optimal dilution of the Zebrafish Gipc1 antibody should be determined by the researcher.

## Immunogen

An E.coli-derived zebrafish Gipc1 recombinant protein (amino acids H70-V335) was used as the immunogen for the Zebrafish Gipc1 antibody.

## Storage

After reconstitution, the Zebrafish Gipc1 antibody can be stored for up to one month at 4oC. For long-term, aliquot and store at -20oC. Avoid repeated freezing and thawing.