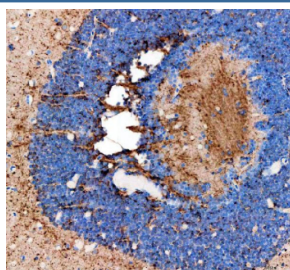


Zebrafish Fshb Antibody / Follicle stimulating hormone beta (RZ1182)

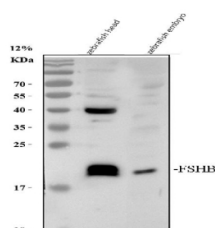
Catalog No.	Formulation	Size
RZ1182	0.5mg/ml if reconstituted with 0.2ml sterile DI water	100 ug

Bulk quote request

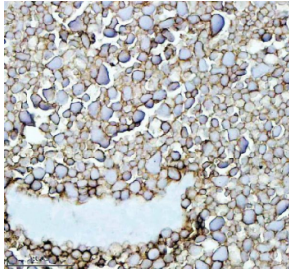
Availability	2-3 weeks
Species Reactivity	Zebrafish
Format	Antigen affinity purified
Clonality	Polyclonal (rabbit origin)
Isotype	Rabbit Ig
Purity	Antigen affinity chromatography
Buffer	Lyophilized from 1X PBS with 2% Trehalose
UniProt	Q6TCF7
Applications	Western Blot : 0.5-1ug/ml Immunohistochemistry (FFPE) : 2-5ug/ml
Limitations	This Zebrafish Fshb antibody is available for research use only.



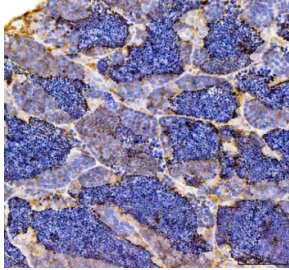
IHC staining of FFPE zebrafish eye tissue with Zebrafish Fshb antibody, HRP-labeled secondary and DAB substrate. HIER: boil tissue sections in pH8 EDTA for 20 min and allow to cool before testing.



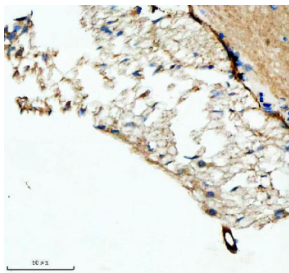
Western blot analysis of Fshb protein using zebrafish Fshb antibody and 1) zebrafish head tissue lysate and 2) zebrafish embryo tissue lysate. Predicted molecular weight ~14 kDa.



IHC staining of FFPE zebrafish ovary tissue with Zebrafish Fshb antibody, HRP-labeled secondary and DAB substrate. HIER: boil tissue sections in pH8 EDTA for 20 min and allow to cool before testing.



IHC staining of FFPE zebrafish testis tissue with Zebrafish Fshb antibody, HRP-labeled secondary and DAB substrate. HIER: boil tissue sections in pH8 EDTA for 20 min and allow to cool before testing.



IHC staining of FFPE zebrafish hypophysis tissue with Zebrafish Fshb antibody, HRP-labeled secondary and DAB substrate. HIER: boil tissue sections in pH8 EDTA for 20 min and allow to cool before testing.