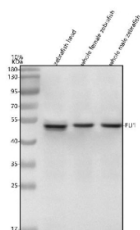


Zebrafish Fli1 Antibody / Friend leukemia integration 1 transcription factor (RZ1224)

Catalog No.	Formulation	Size
RZ1224	0.5mg/ml if reconstituted with 0.2ml sterile DI water	100 ug

[Bulk quote request](#)

Availability	2-3 weeks
Species Reactivity	Zebrafish
Format	Antigen affinity purified
Clonality	Polyclonal (rabbit origin)
Isotype	Rabbit Ig
Purity	Antigen affinity chromatography
Buffer	Lyophilized from 1X PBS with 2% Trehalose
UniProt	A0A8M9PLW9
Applications	Western Blot : 0.5-1ug/ml
Limitations	This Zebrafish Fli1 antibody is available for research use only.



Western blot analysis of Fli1 protein using Zebrafish Fli1 antibody and 1) zebrafish head, 2) whole female zebrafish and 3) whole male zebrafish tissue lysate. Predicted molecular weight ~54 kDa.

Description

Friend leukemia integration 1 transcription factor (FLI1), also known as transcription factor ERGB, is a protein that in humans is encoded by the FLI1 gene, which is a proto-oncogene. It is mapped to 11q24.3. This gene encodes a transcription factor containing an ETS DNA-binding domain. The gene can undergo a t(11;22)(q24;q12) translocation with the Ewing sarcoma gene on chromosome 22, which results in a fusion gene that is present in the majority of Ewing sarcoma cases. An acute lymphoblastic leukemia-associated t(4;11)(q21;q23) translocation involving this gene has also been identified. Alternative splicing results in multiple transcript variants.

Application Notes

Optimal dilution of the Zebrafish Fli1 antibody should be determined by the researcher.

Immunogen

E. coli-derived zebrafish Fli1 recombinant protein (amino acids M1-H426) was used as the immunogen for the Zebrafish Fli1 antibody.

Storage

After reconstitution, the Zebrafish Fli1 antibody can be stored for up to one month at 4oC. For long-term, aliquot and store at -20oC. Avoid repeated freezing and thawing.