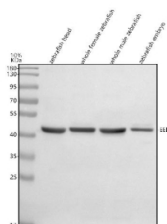


## Zebrafish Eed Antibody / Embryonic ectoderm development protein (RZ1103)

Catalog No.	Formulation	Size
RZ1103	0.5mg/ml if reconstituted with 0.2ml sterile DI water	100 ug

[Bulk quote request](#)

Availability	2-3 weeks
Species Reactivity	Zebrafish
Format	Antigen affinity purified
Clonality	Polyclonal (rabbit origin)
Isotype	Rabbit Ig
Purity	Antigen affinity chromatography
Buffer	Lyophilized from 1X PBS with 2% Trehalose
UniProt	Q566T0
Applications	Western Blot : 0.5-1 ug/ml
Limitations	This Zebrafish Eed antibody is available for research use only.



Western blot analysis of EED protein using Zebrafish Eed antibody and 1) zebrafish head, 2) whole female zebrafish, 3) whole male zebrafish and 4) zebrafish embryo tissue lysate. Predicted molecular weight ~51 kDa.

### Description

Polycomb protein EED is a protein that in humans is encoded by the EED gene. It is a member of the Polycomb-group (PcG) family. PcG family members form multimeric protein complexes, which are involved in maintaining the transcriptional repressive state of genes over successive cell generations. This protein interacts with enhancer of zeste 2, the cytoplasmic tail of integrin beta-7, immunodeficiency virus type 1 (HIV-1) MA protein, and histone deacetylase proteins. Furthermore, this protein mediates repression of gene activity through histone deacetylation, and may act as a specific regulator of integrin function. Two transcript variants encoding distinct isoforms have been identified for this gene.

## Application Notes

Optimal dilution of the Zebrafish Eed antibody should be determined by the researcher.

## Immunogen

An E.coli-derived zebrafish EED recombinant protein (amino acids K79-R443) was used as the immunogen for the Zebrafish Eed antibody.

## Storage

After reconstitution, the Zebrafish Eed antibody can be stored for up to one month at 4oC. For long-term, aliquot and store at -20oC. Avoid repeated freezing and thawing.