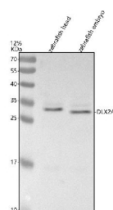


## Zebrafish Dlx2a Antibody / Dlx2 (RZ1218)

Catalog No.	Formulation	Size
RZ1218	0.5mg/ml if reconstituted with 0.2ml sterile DI water	100 ug

**Bulk quote request**

<b>Availability</b>	2-3 weeks
<b>Species Reactivity</b>	Zebrafish
<b>Format</b>	Antigen affinity purified
<b>Clonality</b>	Polyclonal (rabbit origin)
<b>Isotype</b>	Rabbit Ig
<b>Purity</b>	Antigen affinity chromatography
<b>Buffer</b>	Lyophilized from 1X PBS with 2% Trehalose
<b>UniProt</b>	P50574
<b>Applications</b>	Western Blot : 0.5-1ug/ml
<b>Limitations</b>	This Zebrafish Dlx2a antibody is available for research use only.



Western blot analysis of Dlx2a protein using Zebrafish Dlx2a antibody and 1) zebrafish head tissue lysates and 2) zebrafish embryo tissue lysates. Predicted molecular weight ~30 kDa.