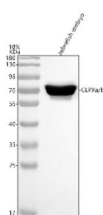


Zebrafish Clpx Antibody / Isoforms a & b (RZ1040)

| Catalog No. | Formulation | Size |
|-------------|---|--------|
| RZ1040 | 0.5mg/ml if reconstituted with 0.2ml sterile DI water | 100 ug |

Bulk quote request

| | |
|---------------------------|--|
| Availability | 2-3 weeks |
| Species Reactivity | Zebrafish |
| Format | Antigen affinity purified |
| Clonality | Polyclonal (rabbit origin) |
| Isotype | Rabbit Ig |
| Purity | Antigen affinity chromatography |
| Buffer | Lyophilized from 1X PBS with 2% Trehalose |
| UniProt | A0A8M9QBU1 |
| Applications | Western Blot : 0.5-1 ug/ml |
| Limitations | This Zebrafish Clpx antibody is available for research use only. |



Western blot analysis of Clpxa/b protein using Zebrafish Clpx antibody and zebrafish embryo tissue lysate. The predicted molecular weight of Clpxa/b is ~68 kDa.

Description

ATP-dependent Clp protease ATP-binding subunit clpX-like, mitochondrial is an enzyme that in humans is encoded by the CLPX gene. This protein is a member of the family of AAA Proteins (AAA+ ATPase) and is to form the protein complex of Clp protease. The protein encoded by this gene is part of a protease found in mitochondria. This protease is ATP-dependent and targets specific proteins for degradation. The protease consists of two heptameric rings of the CLPP catalytic subunit sandwiched between two hexameric rings of the chaperone subunit encoded by this gene. Targeted proteins are unwound by this protein and then passed on to the CLPP subunit for degradation. Two transcript variants, one protein-coding and the other non-protein coding, have been found for this gene.

Application Notes

Optimal dilution of the Zebrafish Clpx antibody should be determined by the researcher.

Immunogen

An E.coli-derived zebrafish Clpxa/b recombinant protein (amino acids A327-L564) was used as the immunogen for the Zebrafish Clpx antibody. This antibody will detect the a and b isoforms.

Storage

After reconstitution, the Zebrafish Clpx antibody can be stored for up to one month at 4oC. For long-term, aliquot and store at -20oC. Avoid repeated freezing and thawing.