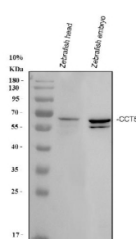


Zebrafish Cct5 Antibody / TCP1 epsilon (RZ1035)

Catalog No.	Formulation	Size
RZ1035	0.5mg/ml if reconstituted with 0.2ml sterile DI water	100 ug

Bulk quote request

Availability	2-3 weeks
Species Reactivity	Zebrafish
Format	Antigen affinity purified
Clonality	Polyclonal (rabbit origin)
Isotype	Rabbit Ig
Purity	Antigen affinity chromatography
Buffer	Lyophilized from 1X PBS with 2% Trehalose
UniProt	Q6NVI6
Applications	Western Blot : 0.5-1 ug/ml
Limitations	This Zebrafish Cct5 antibody is available for research use only.



Western blot analysis of Zebrafish Cct5 protein using Zebrafish Cct5 antibody with 1) zebrafish head and 2) zebrafish embryo tissue lysate. Predicted molecular weight ~59 kDa.

Description

CCT5 is a molecular chaperone that is a member of the chaperonin containing TCP1 complex (CCT), also known as the TCP1 ring complex (TRiC). This complex consists of two identical stacked rings, each containing eight different proteins. Unfolded polypeptides enter the central cavity of the complex and are folded in an ATP-dependent manner. The complex folds various proteins, including actin and tubulin. Mutations in this gene cause hereditary sensory and autonomic neuropathy with spastic paraplegia (HSNSP). Alternative splicing results in multiple transcript variants. Related pseudogenes have been identified on chromosomes 5 and 13.

Application Notes

Optimal dilution of the Zebrafish Cct5 antibody should be determined by the researcher.

Immunogen

An E.coli-derived zebrafish Cct5 recombinant protein (amino acids S442-D541) was used as the immunogen for the Zebrafish Cct5 antibody.

Storage

After reconstitution, the Zebrafish Cct5 antibody can be stored for up to one month at 4oC. For long-term, aliquot and store at -20oC. Avoid repeated freezing and thawing.