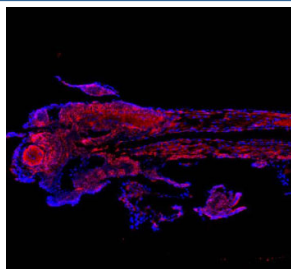


Zebrafish Cct4 Antibody / TCP1 delta (RZ1170)

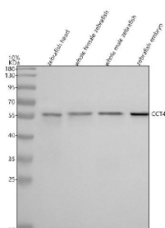
Catalog No.	Formulation	Size
RZ1170	0.5mg/ml if reconstituted with 0.2ml sterile DI water	100 ug

Bulk quote request

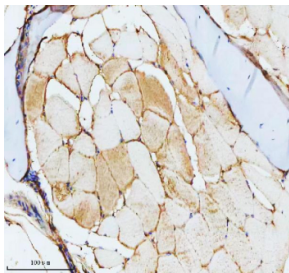
Availability	2-3 weeks
Species Reactivity	Zebrafish
Format	Antigen affinity purified
Clonality	Polyclonal (rabbit origin)
Isotype	Rabbit Ig
Purity	Antigen affinity chromatography
Buffer	Lyophilized from 1X PBS with 2% Trehalose
UniProt	Q6PH46
Localization	Cytoplasm
Applications	Western Blot : 0.5-1 ug/ml Immunohistochemistry (FFPE) : 2-5 ug/ml Immunofluorescence : 5 ug/ml
Limitations	This Zebrafish Cct4 antibody is available for research use only.



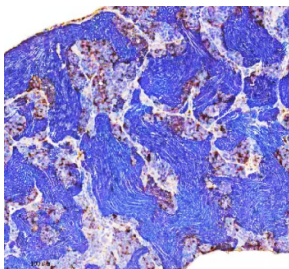
Immunofluorescent staining of FFPE zebrafish embryo tissue with Zebrafish Cct4 antibody (red) and DAPI nuclear stain (blue). HIER: steam section in pH8 EDTA buffer for 20 min.



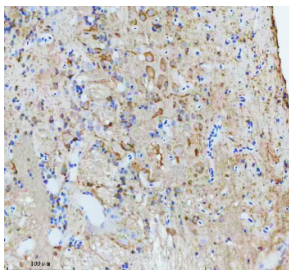
Western blot analysis of Cct4 protein using Zebrafish Cct4 antibody and 1) zebrafish head, 2) whole female zebrafish, 3) whole male zebrafish and 4) zebrafish embryo tissue lysate. Predicted molecular weight ~57 kDa.



IHC staining of FFPE zebrafish skeletal muscle tissue with Zebrafish Cct4 antibody, HRP secondary and DAB substrate. HIER: boil tissue sections in pH8 EDTA for 20 min and allow to cool before testing.



IHC staining of FFPE zebrafish testis tissue with Zebrafish Cct4 antibody, HRP secondary and DAB substrate. HIER: boil tissue sections in pH8 EDTA for 20 min and allow to cool before testing.



IHC staining of FFPE zebrafish brain tissue with Zebrafish Cct4 antibody, HRP secondary and DAB substrate. HIER: boil tissue sections in pH8 EDTA for 20 min and allow to cool before testing.

Description

T-complex protein 1 subunit delta is a protein that in humans is encoded by the CCT4 gene. This gene is mapped to 2p15. The chaperonin containing TCP1 complex (CCT), also called the TCP1 ring complex, consists of 2 back-to-back rings, each containing 8 unique but homologous subunits, such as CCT4. CCT assists the folding of newly translated polypeptide substrates through multiple rounds of ATP-driven release and rebinding of partially folded intermediate forms. Substrates of CCT include the cytoskeletal proteins actin and tubulin, as well as alpha-transducin.

Application Notes

Optimal dilution of the Zebrafish Cct4 antibody should be determined by the researcher.

Immunogen

An E.coli-derived zebrafish Cct4 recombinant protein (amino acids R446-R533) was used as the immunogen for the Zebrafish Cct4 antibody.

Storage

After reconstitution, the Zebrafish Cct4 antibody can be stored for up to one month at 4oC. For long-term, aliquot and store at -20oC. Avoid repeated freezing and thawing.

