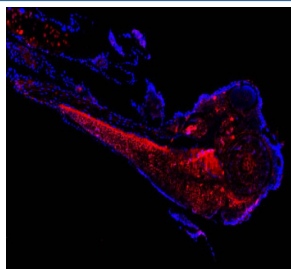


## Zebrafish Cct3 Antibody / TCP1 gamma (RZ1002)

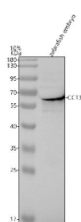
Catalog No.	Formulation	Size
RZ1002	0.5mg/ml if reconstituted with 0.2ml sterile DI water	100 ug

**Bulk quote request**

<b>Availability</b>	2-3 weeks
<b>Species Reactivity</b>	Zebrafish
<b>Format</b>	Antigen affinity purified
<b>Clonality</b>	Polyclonal (rabbit origin)
<b>Isotype</b>	Rabbit Ig
<b>Purity</b>	Antigen affinity chromatography
<b>Buffer</b>	Lyophilized from 1X PBS with 2% Trehalose
<b>UniProt</b>	Q8JHI7
<b>Localization</b>	Cytoplasm
<b>Applications</b>	Western Blot : 0.5-1 ug/ml Immunofluorescence : 5 ug/ml
<b>Limitations</b>	This Zebrafish Cct3 antibody is available for research use only.



Immunofluorescent analysis of Cct3 protein using Zebrafish Cct3 antibody (red) and DAPI nuclear stain (blue) with zebrafish embryo tissue. HIER: boil tissue sections in pH8 EDTA for 20 min and allow to cool before testing.



Western blot analysis of Cct3 protein using Zebrafish Cct3 antibody and zebrafish embryo tissue lysate. The predicted molecular weight of Cct3 is 61 kDa.

## Description

T-complex protein 1 subunit gamma is a protein that in humans is encoded by the CCT3 gene. The protein encoded by this gene is a molecular chaperone that is a member of the chaperonin containing TCP1 complex (CCT), also known as the TCP1 ring complex (TRiC). This complex consists of two identical stacked rings, each containing eight different proteins. Unfolded polypeptides enter the central cavity of the complex and are folded in an ATP-dependent manner. The complex folds various proteins, including actin and tubulin. Alternate transcriptional splice variants have been characterized for this gene. In addition, a pseudogene of this gene has been found on chromosome 8.

## Application Notes

Optimal dilution of the Zebrafish Cct3 antibody should be determined by the researcher.

## Immunogen

An E.coli-derived zebrafish Cct3 recombinant protein (amino acids L492-E543) was used as the immunogen for the Zebrafish Cct3 antibody.

## Storage

After reconstitution, the Zebrafish Cct3 antibody can be stored for up to one month at 4oC. For long-term, aliquot and store at -20oC. Avoid repeated freezing and thawing.