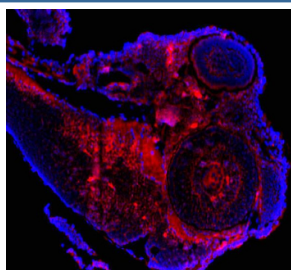


Zebrafish Cask Antibody / Caska (RZ1036)

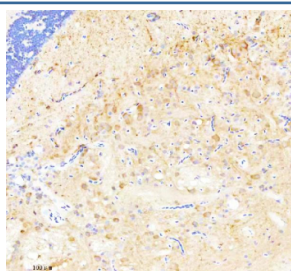
Catalog No.	Formulation	Size
RZ1036	0.5mg/ml if reconstituted with 0.2ml sterile DI water	100 ug

Bulk quote request

Availability	2-3 weeks
Species Reactivity	Zebrafish
Format	Antigen affinity purified
Clonality	Polyclonal (rabbit origin)
Isotype	Rabbit Ig
Purity	Antigen affinity chromatography
Buffer	Lyophilized from 1X PBS with 2% Trehalose
UniProt	Q910A4
Applications	Immunohistochemistry (FFPE) : 2-5 ug/ml Immunofluorescence : 5 ug/ml
Limitations	This Zebrafish Cask antibody is available for research use only.



Immunofluorescent analysis of Cask protein using Zebrafish Cask antibody (red) and DAPI nuclear stain (blue) with zebrafish embryo tissue. HIER: boil tissue sections in pH8 EDTA for 20 min and allow to cool before testing



Immunohistochemical analysis of Cask protein using Zebrafish Cask antibody and paraffin-embedded zebrafish brain tissue. HIER: boil tissue sections in pH8 EDTA for 20 min and allow to cool before testing.

Description

Peripheral plasma membrane protein CASK is a protein that in humans is encoded by the CASK gene. This gene encodes a calcium/calmodulin-dependent serine protein kinase. The encoded protein is a MAGUK (membrane-associated guanylate kinase) protein family member. These proteins are scaffold proteins and the encoded protein is located at synapses in the brain. Mutations in this gene are associated with FG syndrome 4, intellectual disability and microcephaly with pontine and cerebellar hypoplasia, and a form of X-linked intellectual disability. Multiple transcript variants encoding different isoforms have been found for this gene.

Application Notes

Optimal dilution of the Zebrafish Cask antibody should be determined by the researcher.

Immunogen

An E.coli-derived zebrafish Cask recombinant protein (amino acids R27-D492) was used as the immunogen for the Zebrafish Cask antibody.

Storage

After reconstitution, the Zebrafish Cask antibody can be stored for up to one month at 4oC. For long-term, aliquot and store at -20oC. Avoid repeated freezing and thawing.