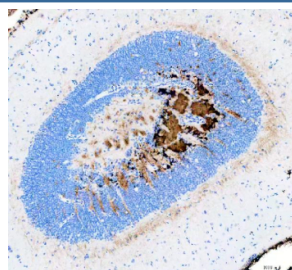


Zebrafish ATP binding cassette E1 Antibody / Abce1 (RZ1144)

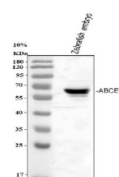
Catalog No.	Formulation	Size
RZ1144	0.5mg/ml if reconstituted with 0.2ml sterile DI water	100 ug

Bulk quote request

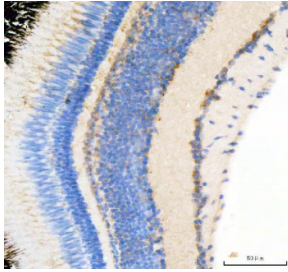
Availability	2-3 weeks
Species Reactivity	Zebrafish
Format	Antigen affinity purified
Clonality	Polyclonal (rabbit origin)
Isotype	Rabbit Ig
Purity	Antigen affinity chromatography
Buffer	Lyophilized from 1X PBS with 2% Trehalose
UniProt	Q6TNW3
Applications	Western Blot : 0.5-1 ug/ml Immunohistochemistry (FFPE) : 2-5 ug/ml
Limitations	This Zebrafish ATP binding cassette E1 antibody is available for research use only.



IHC staining of FFPE zebrafish brain tissue with Zebrafish ATP binding cassette E1 antibody, HRP-secondary and DAB substrate. HIER: boil tissue sections in pH8 EDTA for 20 min and allow to cool before testing.



Western blot analysis of Zebrafish ATP binding cassette E1 protein using Zebrafish ATP binding cassette E1 antibody and zebrafish embryo tissue lysate. Predicted molecular weight ~67 kDa.



IHC staining of FFPE zebrafish eye tissue with Zebrafish ATP binding cassette E1 antibody, HRP-secondary and DAB substrate. HIER: boil tissue sections in pH8 EDTA for 20 min and allow to cool before testing.

Description

ATP binding cassette E1 (ABCE1, also RNase L inhibitor) is an ATPase found in humans involved in viral assembly. It is a member of the ATP-binding cassette (ABC) transporters superfamily and OABP subfamily. ABCE1 inhibits the action of ribonuclease L. Ribonuclease L normally binds to 2-5A (5'-phosphorylated 2',5'-linked oligoadenylates) and inhibits the interferon-regulated 2-5A/RNase L pathway, which is used by viruses. ABCE1 heterodimerize with ribonuclease L and prevents its interaction with 2-5A, antagonizing the anti-viral properties of ribonuclease L, and allow the virus to synthesize viral proteins. It has also been implicated to have an effect in tumor cell proliferation and antiapoptosis.

Application Notes

Optimal dilution of the Zebrafish ATP binding cassette E1 antibody should be determined by the researcher.

Immunogen

An E.coli-derived zebrafish ABCE1 recombinant protein (amino acids Q141-D599) was used as the immunogen for the Zebrafish ATP binding cassette E1 antibody.

Storage

After reconstitution, the Zebrafish ATP binding cassette E1 antibody can be stored for up to one month at 4°C. For long-term, aliquot and store at -20°C. Avoid repeated freezing and thawing.