

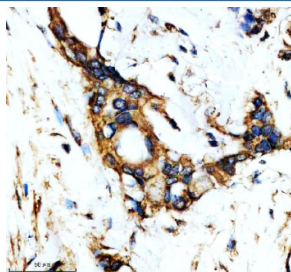
YWHAQ Antibody / 14-3-3 theta [clone HHF-25] (RQ8915)

Catalog No.	Formulation	Size
RQ8915	Antibody in PBS with 0.02% sodium azide, 50% glycerol and 0.4-0.5mg/ml BSA	100 ul

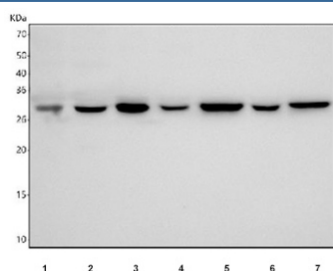
Recombinant **RABBIT MONOCLONAL**

[Bulk quote request](#)

Availability	1-3 days
Species Reactivity	Human
Format	Purified
Clonality	Recombinant Rabbit Monoclonal
Isotype	Rabbit IgG
Clone Name	HHF-25
Purity	Affinity chromatography
UniProt	P27348
Localization	Cytoplasm
Applications	Western Blot : 1:500 Immunohistochemistry (FFPE) : 1:50
Limitations	This YWHAQ antibody is available for research use only.



IHC staining of FFPE human pancreatic cancer tissue with YWHAQ antibody, HRP-secondary and DAB substrate. HIER: boil tissue sections in pH8 EDTA for 20 min and allow to cool before testing.



Western blot testing of 1) human HeLa, 2) human A549, 3) human SH-SY5Y, 4) human U-251, 5) rat brain, 6) rat C6 and 7) mouse brain tissue lysate with YWHAZ antibody. Predicted molecular weight ~28 kDa.

