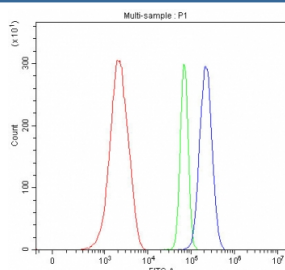


## Y-box-binding protein 1 Antibody / YB1 / MYS1 (RQ7576)

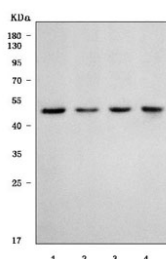
Catalog No.	Formulation	Size
RQ7576	0.5mg/ml if reconstituted with 0.2ml sterile DI water	100 ug

**Bulk quote request**

<b>Availability</b>	1-3 business days
<b>Species Reactivity</b>	Mouse, Rat
<b>Format</b>	Antigen affinity purified
<b>Clonality</b>	Polyclonal (rabbit origin)
<b>Isotype</b>	Rabbit IgG
<b>Purity</b>	Antigen affinity purified
<b>Buffer</b>	Lyophilized from 1X PBS with 2% Trehalose
<b>UniProt</b>	P62960
<b>Applications</b>	Western Blot : 0.5-1ug/ml Flow Cytometry : 1-3ug/million cells
<b>Limitations</b>	This Y-box-binding protein 1 antibody is available for research use only.



Flow cytometry testing of mouse ANA-1 cells with Y-box-binding protein 1 antibody at 1ug/million cells (blocked with goat sera); Red=cells alone, Green=isotype control, Blue=Y-box-binding protein 1 antibody.



Western blot testing of 1) rat RH35, 2) mouse spleen, 3) mouse testis and 4) mouse Neuro-2a cell lysate with Y-box-binding protein 1 antibody. Expected molecular weight: 39~50 kDa depending on glycosylation level.

## Description

Y box binding protein 1, also known as Y-box transcription factor or nuclease-sensitive element-binding protein 1, is a protein that in humans is encoded by the YBX1 gene. Enables chromatin binding activity; mRNA binding activity; and single-stranded DNA binding activity. Involved in epidermis development and negative regulation of cellular senescence. Acts upstream of or within several processes, including cellular response to interleukin-7; negative regulation of striated muscle cell differentiation; and negative regulation of transcription by RNA polymerase II. Located in cytoplasm and nucleus. Part of histone pre-mRNA 3'end processing complex. Is expressed in several structures, including branchial arch; central nervous system; facial prominence; gonad; and retina. Orthologous to human YBX1 (Y-box binding protein 1).

## Application Notes

Optimal dilution of the Y-box-binding protein 1 antibody should be determined by the researcher.

## Immunogen

Amino acids RRFPPYYMRRPYARRPQYSNPPVQ from the human protein were used as the immunogen for the Y-box-binding protein 1 antibody.

## Storage

After reconstitution, the Y-box-binding protein 1 antibody can be stored for up to one month at 4oC. For long-term, aliquot and store at -20oC. Avoid repeated freezing and thawing.