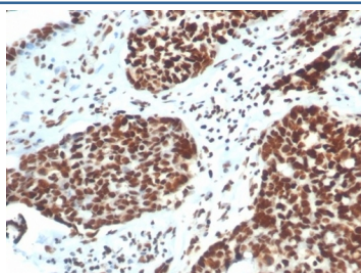


## XRCC5 Antibody [clone XRCC5/7316] (V4940)

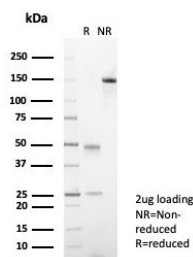
Catalog No.	Formulation	Size
V4940-100UG	0.2 mg/ml in 1X PBS with 0.1 mg/ml BSA (US sourced), 0.05% sodium azide	100 ug
V4940-20UG	0.2 mg/ml in 1X PBS with 0.1 mg/ml BSA (US sourced), 0.05% sodium azide	20 ug
V4940SAF-100UG	1 mg/ml in 1X PBS; BSA free, sodium azide free	100 ug

[Bulk quote request](#)

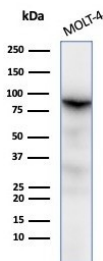
<b>Availability</b>	1-3 business days
<b>Species Reactivity</b>	Human
<b>Format</b>	Purified
<b>Clonality</b>	Monoclonal (mouse origin)
<b>Isotype</b>	Mouse IgG1 + IgG2b, kappa
<b>Clone Name</b>	XRCC5/7316
<b>Purity</b>	Protein A/G affinity
<b>UniProt</b>	P13010
<b>Localization</b>	Nucleus
<b>Applications</b>	Western Blot : 1-2ug/ml Immunohistochemistry (FFPE) : 1-2ug/ml for 30 min at RT
<b>Limitations</b>	This XRCC5 antibody is available for research use only.



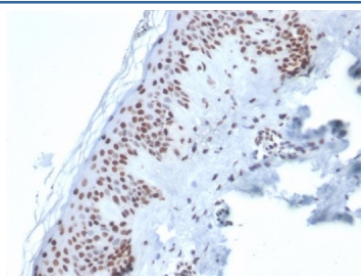
IHC staining of FFPE human colon tissue with XRCC5 / Ku86 / Ku80 antibody (clone XRCC5/7316). HIER: boil tissue sections in pH 9 10mM Tris with 1mM EDTA for 20 min and allow to cool before testing.



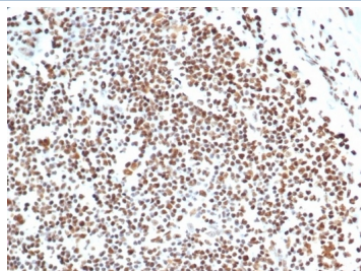
SDS-PAGE analysis of purified, BSA-free XRCC5 / Ku86 / Ku80 antibody (clone XRCC5/7316) as confirmation of integrity and purity.



Western blot testing of human MOLT-4 cell lysates using XRCC5 / Ku86 / Ku80 antibody (clone XRCC5/7316).



IHC staining of FFPE human skin tissue with XRCC5 / Ku86 / Ku80 antibody (clone XRCC5/7316). HIER: boil tissue sections in pH 9 10mM Tris with 1mM EDTA for 20 min and allow to cool before testing.



IHC staining of FFPE human lymph node tissue with XRCC5 / Ku86 / Ku80 antibody (clone XRCC5/7316). HIER: boil tissue sections in pH 9 10mM Tris with 1mM EDTA for 20 min and allow to cool before testing.

## Description

The Ku protein is localized in the nucleus and is composed of subunits referred to as Ku-70 (or p70) and Ku-86 or (p86) which is also known by the synonym Ku-80 or (p80). Ku was first described as an autoantigen to which antibodies were produced in a patient with scleroderma-polymyositis overlap syndrome, and was later found in the sera of patients with other rheumatic diseases. Ku has several functions, including cell signaling, DNA replication and transcriptional activation. Ku is involved in Pol II-directed transcription by virtue of its DNA binding activity; serving as the regulatory component of the DNA-associated protein kinase that phosphorylates Pol II and transcription factor Sp. Ku proteins also activate transcription from the U1 small nuclear RNA and the human transferrin receptor gene promoters.

## Application Notes

Optimal dilution of the XRCC5 antibody should be determined by the researcher.

## Immunogen

A recombinant partial protein sequence (within amino acids 300-500) from the human protein was used as the immunogen for the XRCC5 antibody.

## Storage

Aliquot the XRCC5 antibody and store frozen at -20oC or colder. Avoid repeated freeze-thaw cycles.