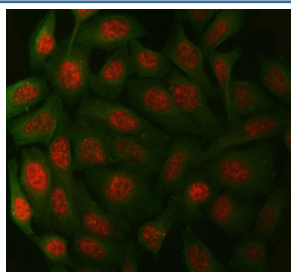


XPA Antibody / DNA repair protein complementing XP-A cells (RQ8170)

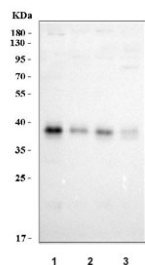
Catalog No.	Formulation	Size
RQ8170	0.5mg/ml if reconstituted with 0.2ml sterile DI water	100 ug

Bulk quote request

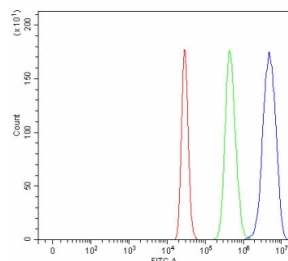
Availability	1-3 business days
Species Reactivity	Human
Format	Antigen affinity purified
Clonality	Polyclonal (rabbit origin)
Isotype	Rabbit IgG
Purity	Antigen affinity purified
Buffer	Lyophilized from 1X PBS with 2% Trehalose
UniProt	P23025
Localization	Nuclear
Applications	Western Blot : 0.5-1ug/ml Immunofluorescence : 5ug/ml Flow Cytometry : 1-3ug/million cells Direct ELISA : 0.1-0.5ug/ml
Limitations	This XPA antibody is available for research use only.



Immunofluorescent staining of FFPE human HeLa cells with XPA antibody (red) and Beta Tubulin mAb (green). HIER: steam section in pH6 citrate buffer for 20 min.



Western blot testing of human 1) 293T, 2) HeLa, 3) MCF7 and 4) A549 cell lysate with XPA antibody. Predicted molecular weight ~31 kDa, commonly observed at 31-40 kDa.



Flow cytometry testing of fixed and permeabilized human 293T cells with XPA antibody at 1ug/million cells (blocked with goat sera); Red=cells alone, Green=isotype control, Blue= XPA antibody.

Description

DNA repair protein complementing XP-A cells is a protein that in humans is encoded by the XPA gene. This gene encodes a zinc finger protein involved in DNA excision repair. The encoded protein is part of the NER (nucleotide excision repair) complex which is responsible for repair of UV radiation-induced photoproducts and DNA adducts induced by chemical carcinogens. Mutations in this gene are associated with xeroderma pigmentosum complementation group A. Alternatively spliced transcript variants have been found for this gene.

Application Notes

Optimal dilution of the XPA antibody should be determined by the researcher.

Immunogen

E. coli-derived recombinant human protein (amino acids D5-M273) was used as the immunogen for the XPA antibody.

Storage

After reconstitution, the XPA antibody can be stored for up to one month at 4°C. For long-term, aliquot and store at -20°C. Avoid repeated freezing and thawing.