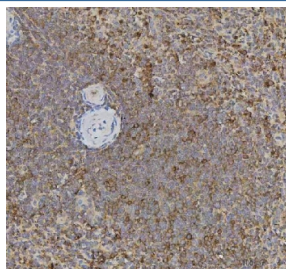


XCR1 Antibody / Chemokine XC receptor 1 / CCXCR1 (RQ7347)

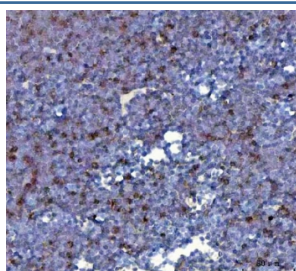
| Catalog No. | Formulation | Size |
|-------------|---|--------|
| RQ7347 | 0.5mg/ml if reconstituted with 0.2ml sterile DI water | 100 ug |

Bulk quote request

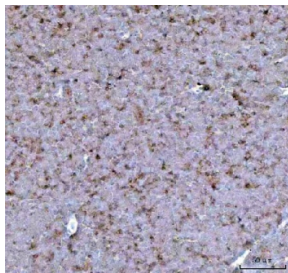
| | |
|---------------------------|--|
| Availability | 1-3 business days |
| Species Reactivity | Human, Mouse, Rat |
| Format | Antigen affinity purified |
| Clonality | Polyclonal (rabbit origin) |
| Isotype | Rabbit IgG |
| Purity | Antigen affinity purified |
| Buffer | Lyophilized from 1X PBS with 2% Trehalose |
| UniProt | P46094 |
| Localization | Cell membrane |
| Applications | Western Blot : 0.5-1ug/ml Immunohistochemistry (FFPE) : 2-5ug/ml Direct ELISA : 0.1-0.5ug/ml |
| Limitations | This XCR1 antibody is available for research use only. |



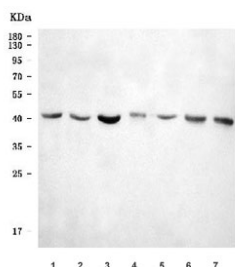
IHC staining of FFPE human spleen tissue with XCR1 antibody. HIER: boil tissue sections in pH8 EDTA for 20 min and allow to cool before testing.



IHC staining of FFPE mouse thymus tissue with XCR1 antibody. HIER: boil tissue sections in pH8 EDTA for 20 min and allow to cool before testing.



IHC staining of FFPE rat thymus tissue with XCR1 antibody. HIER: boil tissue sections in pH8 EDTA for 20 min and allow to cool before testing.



Western blot testing of 1) human RT4, 2) human U-87 MG, 3) human HEL, 4) human U-2 OS, 5) rat spleen, 6) mouse spleen and 7) mouse thymus tissue lysate with XCR1 antibody. Predicted molecular weight ~39 kDa.

Description

The protein encoded by this gene is a chemokine receptor belonging to the G protein-coupled receptor superfamily. The family members are characterized by the presence of 7 transmembrane domains and numerous conserved amino acids. This receptor is most closely related to RBS11 and the MIP1- α /RANTES receptor. It transduces a signal by increasing the intracellular calcium ions level. The viral macrophage inflammatory protein-II is an antagonist of this receptor and blocks signaling. Several alternatively spliced transcript variants encoding the same protein have been found for this gene.

Application Notes

Optimal dilution of the XCR1 antibody should be determined by the researcher.

Immunogen

Recombinant human protein (amino acids F246-N274) was used as the immunogen for the XCR1 antibody.

Storage

After reconstitution, the XCR1 antibody can be stored for up to one month at 4°C. For long-term, aliquot and store at -20°C. Avoid repeated freezing and thawing.