

## WT1 Antibody (R35224)

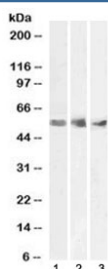
Catalog No.	Formulation	Size
R35224-100UG	0.5 mg/ml in 1X TBS, pH7.3, with 0.5% BSA (US sourced) and 0.02% sodium azide	100 ug

[Bulk quote request](#)

Availability	1-3 business days
Species Reactivity	Human
Format	Antigen affinity purified
Clonality	Polyclonal (goat origin)
Isotype	Goat Ig
Purity	Antigen affinity
Gene ID	7490
Localization	Nuclear, cytoplasmic
Applications	Western Blot : 1-3ug/ml ELISA (peptide) LOD : 1:4000
Limitations	This WT1 antibody is available for research use only.



Western blot testing of human spleen lysate with WT1 antibody at 1ug/ml. Predicted molecular weight ~54 kDa.



Western blot testing of human 1) spleen, 2) kidney and 3) testis lysate with WT1 antibody at 1ug/ml. Predicted molecular weight ~54 kDa.

## Description

Additional name(s) for this target protein: Wilms tumor 1; WT1

## Application Notes

Optimal dilution of the WT1 antibody should be determined by the researcher.

## Immunogen

Amino acids QDPASTCVPEPASQH were used as the immunogen for this WT1 antibody.

## Storage

Aliquot and store the WT1 antibody at -20oC.