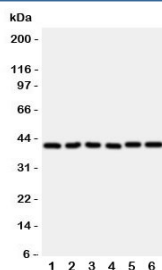


WISP1 Antibody (R31201)

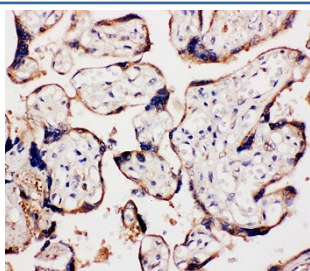
Catalog No.	Formulation	Size
R31201	0.5mg/ml if reconstituted with 0.2ml sterile DI water	100 ug

Bulk quote request

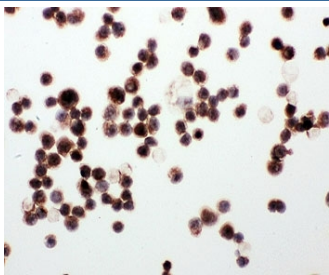
Availability	1-3 business days
Species Reactivity	Human, Mouse, Rat
Format	Antigen affinity purified
Clonality	Polyclonal (rabbit origin)
Isotype	Rabbit IgG
Purity	Antigen affinity
Buffer	Lyophilized from 1X PBS with 2.5% BSA and 0.025% sodium azide/thimerosal
UniProt	O95388
Applications	Western Blot : 0.5-1ug/ml IHC (FFPE) : 0.5-1ug/ml IHC (Frozen) : 0.5-1ug/ml Immunocytochemistry : 0.5-1ug/ml
Limitations	This WISP1 antibody is available for research use only.



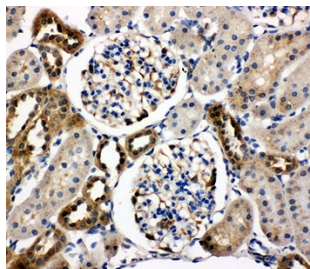
Western blot testing of rat 1) heart, 2) kidney, 3) lung and human 4) A549, 5) A431 and 6) COLO320 lysate with WISP1 antibody. Expected molecular weight: 40-55 kDa depending on degree of glycosylation.



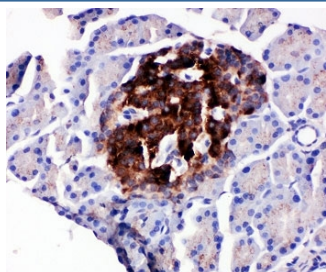
IHC staining of FFPE human placental tissue with WISP1 antibody. HIER: boil tissue sections in pH6, 10mM citrate buffer, for 10-20 min and allow to cool before testing.



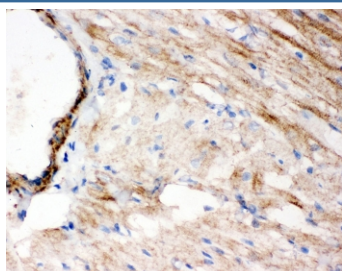
ICC testing of WISP1 antibody and human MCF-7 cells.



IHC staining of FFPE rat kidney tissue with WISP1 antibody. HIER: boil tissue sections in pH6, 10mM citrate buffer, for 10-20 min and allow to cool before testing.



IHC staining of FFPE rat pancreas with WISP1 antibody. HIER: boil tissue sections in pH6, 10mM citrate buffer, for 10-20 min and allow to cool before testing.



IHC staining of frozen rat heart tissue with WISP1 antibody.

Description

WNT1-Inducible Signaling Pathway Protein 1, also known as CCN4, is a matricellular protein that in humans is encoded by the WISP1 gene. It is induced by WNT1 and belongs to the CCN family, which includes connective tissue growth factor, cysteine-rich-61, and nephroblastoma overexpressed (Tanaka et al., 2001). By use of radiation hybrid mapping panels, Pennica et al.(1998) mapped the gene to chromosome 8q24.1-q24.3, roughly 4 Mb distal to MYC. Pennica et al.(1998) found that two distinct systems demonstrated that WISP1 induction was associated with expression of WNT1. WISP1 genomic DNA was amplified in colon cancer cell lines and in human colon tumors, and its RNA was overexpressed in 84% of tumors examined compared with patient-matched normal mucosa.

Application Notes

The stated application concentrations are suggested starting amounts. Titration of the WISP1 antibody may be required due to differences in protocols and secondary/substrate sensitivity.

Immunogen

An amino acid sequence from the C-terminus of human WNT1-Inducible Signaling Pathway Protein 1 (ADLESYPDFSEIAN) was used as the immunogen for this WISP1 antibody.

Storage

After reconstitution, the WISP1 antibody can be stored for up to one month at 4°C. For long-term, aliquot and store at -20°C. Avoid repeated freezing and thawing.