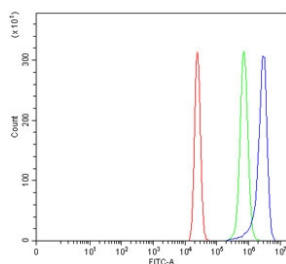


WIPF3 Antibody / CR16 (RQ7559)

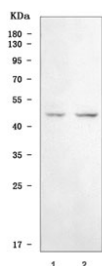
Catalog No.	Formulation	Size
RQ7559	0.5mg/ml if reconstituted with 0.2ml sterile DI water	100 ug

Bulk quote request

Availability	1-3 business days
Species Reactivity	Human
Format	Antigen affinity purified
Clonality	Polyclonal (rabbit origin)
Isotype	Rabbit IgG
Purity	Antigen affinity purified
Buffer	Lyophilized from 1X PBS with 2% Trehalose
UniProt	A6NGB9
Applications	Western Blot : 0.5-1ug/ml Flow Cytometry : 1-3ug/million cells
Limitations	This WIPF3 antibody is available for research use only.



Flow cytometry testing of human U-2 OS cells with WIPF3 antibody at 1ug/million cells (blocked with goat sera); Red=cells alone, Green=isotype control, Blue= WIPF3 antibody.



Western blot testing of human 1) K562 and 2) 293T cell lysate with WIPF3 antibody. Predicted molecular weight ~49 kDa.

Description

WAS/WASL-interacting protein family member 3 (WIPF3), also called Corticosteroids and regional expression protein 16 homolog (CR16), is predicted to enable SH3 domain binding activity and actin binding activity. Predicted to be involved in actin filament-based movement. Predicted to be located in cytosol. Predicted to be active in actin filament.

Application Notes

Optimal dilution of the WIPF3 antibody should be determined by the researcher.

Immunogen

Amino acids EDFPPPDEYKPCQKIYPSKIPR from the human protein were used as the immunogen for the WIPF3 antibody.

Storage

After reconstitution, the WIPF3 antibody can be stored for up to one month at 4°C. For long-term, aliquot and store at -20°C. Avoid repeated freezing and thawing.